

Sec 34 Sec 35

	a	B	b	c	d	e	f	g
y	6	6	5	6	4	6	2	6
x	7	5	8	9	5	10	5	12
w	18	4	17	4	16	4	14	4
v	19	3	20	3	21	3	23	3
u	30	2	29	2	28	2	26	2
t	31	1	32	1	33	1	35	1
	s	r	q	p	o	n	m	

Township 12 North Range 1 West

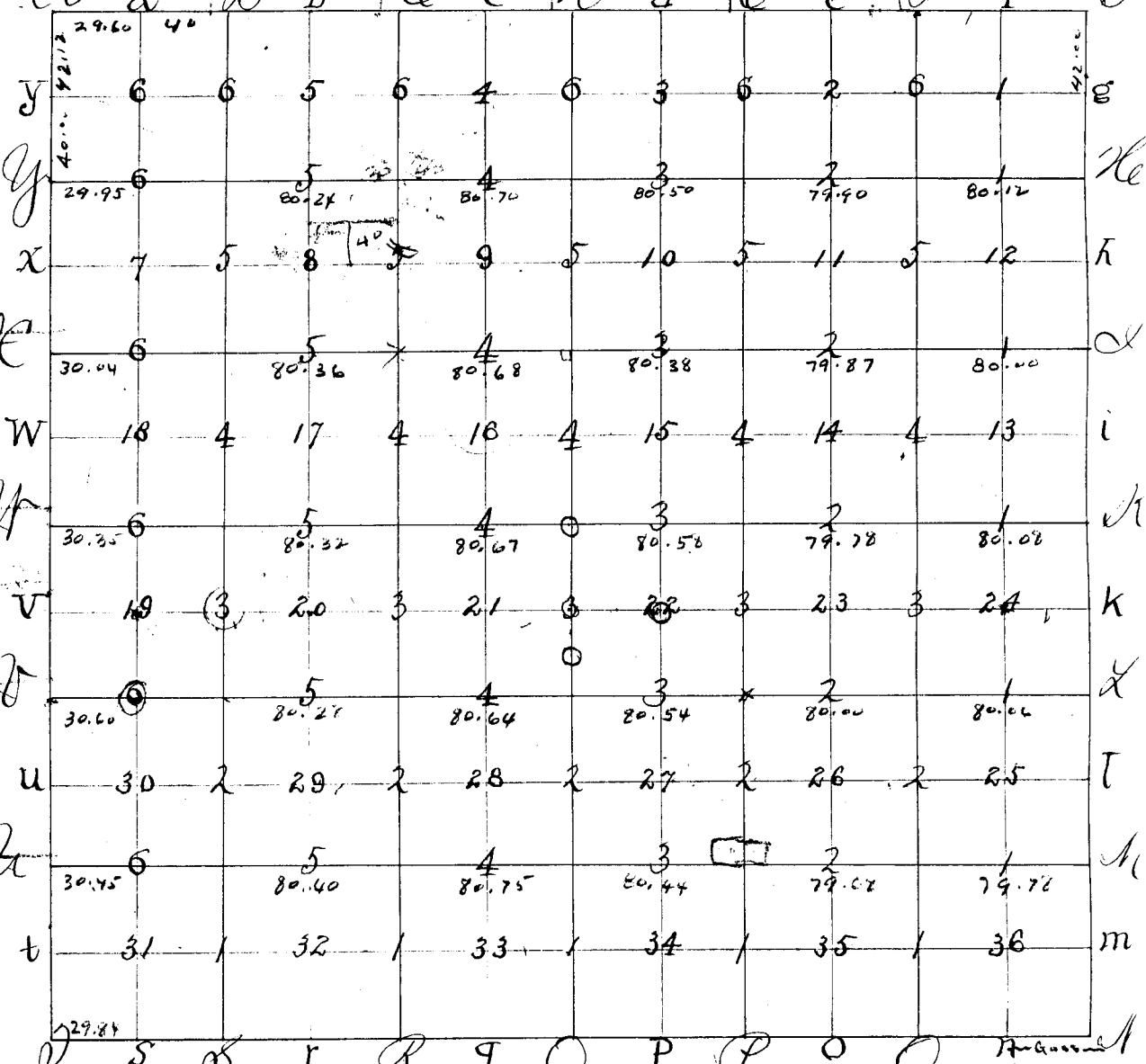
316
y

3129
w

31
v

310
u

31
t



FIELD NOTES OF MORGAN COUNTY, INDIANA.

Township 12 North, Range 1 West

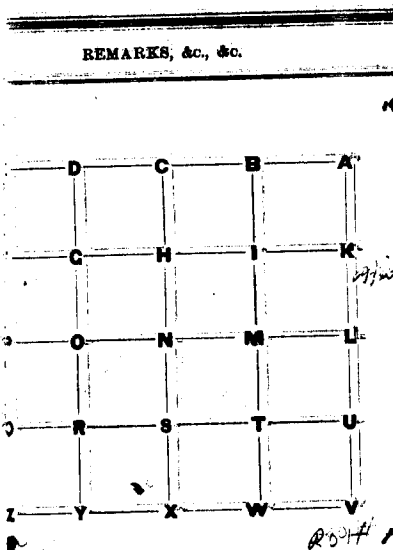
Corners.	Bearing Trees.	Diam.	Courses.	Dist.	Corners.	Bearing Trees.	Diam.	Courses.	Dist.	
at	A	Beech	N 22 E	19	at	T	B Oak	27	N 71 E	15
		Maple	S 61 W	13			Sugar	9	N 16 W	4
"	a				"	M	Gum	12	N 17 E	33
"	B	Beech	S 32 W	27	"	m	"	30	N 78 W	2
"		"	S 49 E	31	"	n	W. Oak	10	N 60 E	3
"	B				"		"	10	N 71 W	8
"	C	Poplar	S 39 E	16	"	M	Beech	10	N 82 E	11
"		Beech	S 2 W	21	"		"	30	S 84 W	26
"	C				"	n	"	30	S 24 W	4
"	D	"	S 77 W	28	"		"	18	N 56 W	27
"		Maple	S 36 E	7	"	O	"	9	N 11 E	20
"	E				"		"	18	S 10 W	25
"		Sugar	N 78 W	7	"	o	"	18	S 60 W	15
"		Beech	S 46 E	8	"		"	18	N 8 E	19
"	e				"	P	"	8	N 29 W	25
"	f	"	N 5 E	14	"		Maple	8	S 36 W	13
"		"	S 56 E	24	"	P	Beech	18	N 41 E	31
"	G	"	S 42 E	7	"		Sugar	8	S 29 W	32
"		Kickory	N 27 W	51	"	Q	Beech	10	N 56 W	24
"	g	"	S 12 E	41	"		"	13	S 54 E	26
"		Beech	N 42 E	35	"	q	Sugar	9	N 77 W	52
"	h	Elm	S 22 W	6	"					
"		W. Beech	N 3 E	11	"	R	Beech	9	N 62 E	23
"	i	Gum	N 73 E	94	"		"	10	S 13 W	13
"		Beech	N 75 W	9	"	r	Elm	11	S 47 W	30
"	J	W Oak	S 70 E	31	"		W. Ash	6	N 8 E	22
"		Beech	S 63 W	28	"	s	Beech	14	S 23 E	6
"	i	"	S 35 E	20	"		Poplar	18	N 65 W	31
"		Sugar	N 19 W	18	"	S	Beech	10	South	9
"	K	"	S 58 E	20	"		Gum	12	N 12 W	29
"		Beech	S 64 W	34	"	D	Kickory	18	N 66 E	24
"	k	Kickory	S 86 W	4	"		S. Oak	30	S 76 W	4
"		Beech	S 26 E	4	"	t				
"	L	Sugar	N 43 E	13	"	U	Beech	18	N 37 E	6
"		Elm	S 38 W	27	"		"	10	S 58 W	27

RECORD OF SURVEYS IN MORGAN COUNTY INDIANA

Section 12

Township 12

North Range 12



REMARKS, &c., &c.	Corners	Stone Mark	Acres	Hum.	Bearing Trees	Dist.	Course	Dist.
	D	STONE			MAPLE 17'	70.5'	W	
	I	STONE BURIED 10"			POPLAR 22'	137.0'	N 80 E	
	W	IRON PIPE			TW. HICKORY 14"	232.5'	S 20 W	
	P	SEE SEC 11-L			W CHERRY 9"	26.9'	S 60 E	
	H	STONE 1" IP over			W CHERRY 8"	40.0'	S 30 E	
	N	STONE (1" PIPE OVER)			WATER MARK	10.6'	SOUTH	
	S	STONE (1" PIPE OVER)			NETCOTON 10"	70.1'	S 20 W	
					CARDON	20.0'	E	
					Shell Hole 12"	18.7'	S. E.	
					Shell Hole 10"	11.9'	S W	
					BRACK 15"	50.4'	W 80 E	
					SW CORNER	70.0'	N 30 E	
					UTILITY POLE	70.0'	N 45 E	
					MAPLE	16.0'	N 60 E	
					W OAK	5.0'	S	
					W OAK	5.0'	SE	
					TRANS POLE	17.0'	N W	
					MAPLE	11.0'	E	
					R OAK	70.0'	S	
					SPIL HILL	71.0'	N	

RECORD OF SURVEYS IN MORGAN COUNTY, INDIANA.

Section 12

Township 12

North, Range 10

REMARKS	Corners	Stone Mark.	Acres.	Hun.	Bearing Trees	Diam.	Courses
d 10.12 1/2 ch N 1/4 In by H. A. Blunt, D 477. 7/25-1915	d	stone			Hickory	5"	S 43° W 1
	o	"			Sugar	3"	N 96 1/2° W 1
	q.	"			ash		S 47 1/2° W 3
	B perpetuated				Hickory		North 3
					stone		South 2
	P	Iron ASIC			Beech	4"	S 31 1/2° W 1
					Sugar	3"	S 60° E 3
					White Oak	12"	N. 35 1/2° W. 3
					" "	10"	S 3 1/2° W. 4
D. Stone	D.	Stone			Hickory	10"	South 51° 15'
					W. Oak	12"	North 68° W
C	C	Stone			South. Limit Corner School House	30 1/2"	38 1/2° East
H	H	"			Cash Tree North 1/2 W 87° E		South 40° E
H South C	H	"			Stone Mark.		N 68 1/2° E 60' South 25 1/2° W
F old stone found	F	old stone found			Sugar	14"	S° E. 12
					Iron wood	4"	S. W. E
					Hickory	5"	N. 30° E. 15
H old stone found	H	old stone found			Hickory	14"	S 56 1/2° W 17
					" "	14"	S. 60 1/2° E 20
G. Steel Bumper Tack Stern	G.	Steel Bumper Tack Stern			Ash	7"	N. 15° E 14
					Ash	5"	N. W. 20
N. old stone (1" pp. ...)	N.	old stone (1" pp. ...)			Maple S.W. corner House	16"	N. 15° E 1
					" "	-	N. 5° E 2
A STONE	A	STONE			BEECH UNDER S.E. SIDE 24" BEECH 3" 1/2" HICKORY 3" 1/2" HICKORY	14" 4" 6"	S 60° W 2 S 80° E 2 N 25° E 1
X STONE	X	STONE			SYCAMORE	4"	S 80° E 2
					POPLAR	18"	S 45° E 42
					ASH	4"	S 45° W 39
B CORNER POST	B	CORNER POST			BEECH	12"	S 31° 30' W 7
					MAPLE	9"	S 60° E 19
					BEECH	13"	N 33° 33'

SEE BACK OF SK-363

FIELD NOTES OF MORGAN COUNTY, INDIANA.

Township 12 North, Range 1 West

Corners.	Bearing Tress.	Diam.	Courses.	Dist.		Corners.	Bearing Tress.	Diam.	Courses.	Dist.	
U	Ironwood	4	S55W	13							2
U	Beech	8	N33E	27							3
V	Sugar	10	S66E	36							2
V	"	12	N53E	28							4
W	Hickory	16	N57E	28							2
W	Beech	10	S24W	35							3
X	Sugar	17	S18W	19							5
X	Ash	30	N76E	8							6
Y											7
											8
											9
											10
											11
											12
											13
											14
											15
											16
											17
											18
											19
											20
											21
											22
											23
											24
											25
											26
											27
											28
											29
											30

FIELD NOTES OF MORGAN COUNTY, INDIANA.

Township

12

North, Range

1 West

	Corners.	Bearing Trees.	Diam.	Courses.	Dist.		Corners.	Bearing Trees.	Diam.	Courses.	Dist.
at	A	Beech	10	N 22 E	19	at	I	B Oak	27	S 71 E	15
		Maple	15	S 61 W	13			Sugar	9	N 16 W	4
"	a					"	Mo	Gum	12	N 17 E	33
"	B	Beech	26	S 32 W	27	"	m	W. Oak	30	N 78 W	2
"		"	24	S 49 E	31	"		"	10	N 60 E	3
"	B					"		"	10	N 71 W	8
"	C	Poplar	4	S 39 E	16	"	N	Beech	10	N 82 E	10
"		Beech	28	S 2 W	21	"		"	30	S 84 W	26
"	c					"	n	"	30	S 24 W	4
"	d	"	8	S 77 W	28	"		"	18	N 56 W	27
"		Nojwood	5	S 36 E	7	"	O	"	9	N 11 E	20
"	I					"		"	18	S 10 W	25
"	E	Sugar	20	N 78 W	7	"	o	"	18	S 60 W	15
"		Beech	4	S 46 E	8	"		"	18	N 8 E	19
"	e					"	P	"	8	N 29 W	25
"	f	"	18	N 5 E	14	"		Nojwood	8	S 36 W	13
"		"	16	S 56 E	24	"		Beech	18	N 41 E	36
"	G	"	9	S 42 E	7	"	P	Sugar	8	S 29 W	33
"		Kickory	12	N 27 W	51	"	Q	Beech	10	N 56 W	24
"	g	"	18	S 12 E	41	"		"	13	S 54 E	26
"		Beech	9	N 42 E	35	"	f	Sugar	9	N 77 W	52
"	h	Elm	18	S 22 W	6	"					
"		W. Beech	8	N 3 E	11	"	R	Beech	9	N 62 E	23
"	H	Gum	18	N 93 E	94	"		"	10	S 13 W	13
"		Beech	10	N 75 W	9	"	L	Elm	11	S 47 W	30
"	I	W Oak	30	S 70 E	31	"		W. Ash	6	N 8 E	22
"		Beech	14	S 63 W	28	"	S	Beech	14	S 23 E	6
"	i	"	27	S 35 E	20	"		Poplar	18	N 65 W	31
"		Sugar	12	N 19 W	18	"	s	Beech	10	South	9
"	K	"	10	S 58 E	20	"		Gum	12	N 12 W	27
"		Beech	9	S 64 W	34	"	J	Kickory	18	N 66 E	24
"	k	Kickory	18	S 86 W	4	"		S. Oak	30	S 76 W	41
"		Beech	4	S 6 E	4	"					
"	L	Sugar	5	N 43 E	13	"	t				
"		Elm	20	S 38 W	27	"	U	Beech	18	N 37 E	6
								"	10	S 55 W	27

FIELD NOTES OF MORGAN COUNTY, INDIANA.

Township

12

North, Range

1 West

T.

Corners.	Bearing Trees.	Diam.	Courses.	Dist.	Corners.	Bearing Trees.	Diam.	Courses.	Dist.	"	"
at U											
" D	Ironwood	4	S55W	13						27'	
	Berch	8	N33E	27						37'	
" V										41'	
" St	Sugar	10	S66E	36						25'	
" "	"	12	N53E	28						4.5'	
" W										27'	
" K	Hickory	16	N57E	28						3'	
	Berch	10	S24W	35						1'	
" X										6'	
" G	Sugar	17	S18W	19						6'	
" "	Ash	30	N76E	8						7'	
" J											

02

FIELD NOTES OF MORGAN COUNTY, INDIANA.

Township

12

North, Range

1 West

Corners.	Bearing Trees.	Diam.	Courses.	Dist.	Corners.	Bearing Trees.	Diam.	Courses.	Dist.
25263536	Beech	4	S73 E	6	at 16.17.20.21	Aronwood	3	S52 E	18
	"	5	N66 W	8		Hogwood	4	S64 W	15
23242526	"	14	S26 W	14	" 89.16.17.	Gassafras	3	N60 E	14
	"	15	N35 E	32		B. Oak	4	S55 W	16
1314.23.24.	"	16	N13 E	11	" 4.5.8.9.	Ash	20	S30 E	6
	"	16	S27 W	26		Hogwood	4	N34 W	28
11.12.13.14.	Poplar	44	N42 E	22	" 29.30.31.32.	Hornbeam	4	N81 E	15
	Beech	26	S31 W	30		S Oak	16	S77 W	28
1.2.11.12.	"	14	S35 E	10	" 19.20.29.30.	Beech	18	N10 E	16
	"	3	N77 W	20		Hogwood	3	S52 W	20
26.27.34.35	"	16	S65 E	28	" 17.18.19.20	Beech	20	N43 E	27
	Hogwood	3	N42 W	35		"	16	S64 W	16
22.23.26.27.	Sugar	5	N69 W	5	" 7.8.17.18.	"	16	N22 W	28
	Beech	4	S56 E	4		Sugar	14	S43 E	18
14.15.22.23	W. Oak	18	N70 E	5	" 5.6.7.8.	Beech	14	S75 W	6
	"	24	S61 W	22		"	4	N13 W	22
10.11.14.15	Beech	12	S67 W	18					
	"	10	S16 E	78					
23.10.11.	"	8	N47 W	14					
	S Oak	26	S57 E	44					
27.28.33.34	Hogwood	3	N53 E	8					
	"	2	S16 W	5					
21.22.27.28.	Beech	20	N61 E	15					
	Poplar	28	S61 W	7					
15.16.21.22	Buckeye	14	S41 E	16					
	"	18	S46 E	18					
9.10.15.16.	Beech	18	N53 E	17					
	Sugar	18	S39 W	13					
3.4.9.10.	"	14	S51 W	6					
	Beech	20	N22 E	28					
28.29.32.33	"	14	N21 W	19					
	Heistony	16	S34 E	28					
20.21.28.29.	Beech	18	N55 E	14					
	"	16	S38 W	25					

FIELD NOTES OF MORGAN COUNTY, INDIANA.

Township

12

North, Range

1 West.

Corners.	Bearing Trees.	Diam.	Courses.	Dist.	Corners.	Bearing Trees.	Diam.	Courses.	Dist.
<i>From M to G</i>					<i>From K to W</i>				
at 1	Beech	20	S 14 W	12	at 5	Hogwood	5	S 51 E	18
	Sugar	14	N 54 E	6		Hickory	12	N 31 E	9
" 2	Beech	4	S 26 E	9	" 6	Beech	28	N 63 W	25
	"	5	N 33 W	18		Sugar	14	S 59 E	14
" 3	Hogwood	3	S 13 W	12	" <i>I to J</i>				
	Beech	4	N 44 E	20	at 1	W. Oak	22	N 7 W	18
" 4	"	16	S 30 W	10		Beech	18	S 21 W	18
" 5	Hickory	12	N 68 W	15	" 2	"	12	N 20 W	7
	"	8	S 58 W	18		"	10	S 48 E	14
" 6	Beech	6	S 58 E	20	" 3	"	6	S 54 E	7
	"	10	S 60 W	19	" 4	R. Oak	11	N 57 W	6
	B. Oak	6	S 49 E	12	" 5	Beech	18	N 40 E	5
<i>L to F</i>					" 6	Hogwood	5	S 45 W	6
at 1	Sugar	20	N 48 E	4	" 7	Beech	22	S 26 W	15
	Beech	8	S 39 W	13		"	16	N 51 E	18
" 2	"	8	S 76 W	10	" 8	Sugar	18	N 45 W	18
	"	20	N 28 W	14	" 9	Beech	32	S 72 E	18
" 3	"	14	S 41 E	13	" <i>H to G</i>				
	"	4	N 8 E	18	at 1	Beech	10	S 32 E	25
" 4	"	12	S 27 W	28		"	16	S 51 W	16
" 5	Hogwood	3	N 4 E	12	" 2	"	14	S 34 E	9
	W. Oak	12	S 46 E	11	" 3	"	20	N 60 W	20
" 6	Hickory	5	N 51 E	22	" 4	"	18	S 62 E	5
	Beech	24	N 15 W	6	" 5	"	20	N 18 W	17
	"	14	S 38 E	10	" 6	Maple	6	S 18 W	11
<i>K to W</i>					" 7	B. Gum	20	N 42 W	22
at 1	"	12	N 41 W	7	" 8	Beech	18	S 15 W	15
	"	14	S 72 E	15	" 9	Ash	26	N 52 E	17
" 2	"	3	S 73 W	7	" 10	Beech	22	S 12 E	14
	"	4	N 73 E	14	" 11	Sugar	15	N 57 E	21
" 3	"	16	S 58 W	14	" <i>O to H</i>				
	Poplar	36	N 9 W	15	at 1	Poplar	4	S 60 E	11
" 4	Beech	28	S 55 E	18		"	6	N 84 -	16
	"	10	N 75 W	28					

FIELD NOTES OF MORGAN COUNTY, INDIANA.

Township

North, Range

7

Courses	Bearing Trees	Diam.	Courses	Dist.	Corners.	Bearing Trees	Diam.	Courses	Dist.	ft.
					from Pt to A					27'
1	Beech	16	N40E	10	at 6	Beech	16	S55W	14	37'
	"	16	S61W	25		"	20	N85E	24	41'
3	"	10	N30W	14	R to C					25'
	W. Oak	18	S34W	15	at 1	Poplar	4	N39W	16	45'
4	Beech	5	N75E	8		Beech	20	S56W	11	27'
	Poplar	20	S23W	15	" 2	"	14	N50E	4	35'
5	Hogwood	4	N59W	15		"	12	S42W	26	41'
	Beech	18	S49E	30	" 3	Sassafras	5	S35W	15	0'
6	"	16	S23W	4		Beech	18	S30E	25	51'
	"	22	N31E	32	" 4	"	14	S30E	26	61'
						W. Oak	4	N27W	23	21'
Pt to E					" 5	Beech	20	S59W	20	31'
at 1	Sugar	18	N50E	14		Sugar	18	N66E	18	21'
	Beech	12	S43W	21	" 6	W. Oak	20	N60W	20	21'
2	"	4	S61W	5		Hickory	18	N62E	14	21'
	Kornbram	4	N41E	27						21'
3	Sugar	4	N21W	6	S to B					21'
	Beech	3	N73E	12	at 1	Sugar	4	N75E	10	21'
4	"	18	S7E	6		Hogwood	5	S33W	14	21'
	Sugar	14	N15W	18	" 2	Beech	5	S53W	10	21'
5	Beech	14	N45E	28		"	6	N55E	13	21'
	"	4	S78W	33	" 3	"	10	N12E	16	21'
6	W. Oak	16	S40E	4		"	4	S43W	27	21'
	Hickory	18	N85W	11	" 4	"	10	N61W	14	21'
						B. Gum	6	S26E	11	21'
Q to A					" 5	Beech	12	N55W	28	21'
at 1	B. Oak	4	S28E	8		"	20	S65E	27	21'
	Hickory	16	N46W	14	" 6	"	18	N64W	7	21'
2	Hogwood	5	N28W	25		"	16	N80E	8	21'
	Beech	14	S65E	10						21'
3	"	3	N17E	12						21'
	Butternut	12	S56W	20						21'
5	Beech	24	S67W	11						21'
	"	18	S27E	10						21'
4	"	4	S47E	6						21'
	W Oak	6	N70W	19						21'

RECORD OF SURVEYS IN MORGAN COUNTY, INDIANA.

Section /

Township / 2

North, Range / 11

REMARKS, &c., &c.	Corners.	Stone Mark.	Acres.	Hun.	Bearing Trees.	Diam.	Courses.
<p style="text-align: center;"><i>By Craig.</i></p>	at N				Beech	6	N 27° W 5
	" O	stone			Walnut	3	S 16° W
	" I				Sogwood	6	S 17° W
	" J	stone			Beech	20	N 54° W 4
	" K				"	22	N 50 1/2° E 1
	" L				"	12	S 51 1/2° W 4
	" M				Sogwood	3	N 46° W
	" N				Hickory	8	S 18° W 6
	" O				W. Elm	10	S 87 1/2° E 7
	" P				Beech	30	N 20° E 4
	" Q				W. Oak	—	N 28° W 2
	<p><i>By Carr Haate Aug. 15-1911</i></p> <p><i>" Carr Haate May 1-1912</i></p>	N	Gas pipe			Poplar	10
O		stone			B. Oak	17	S 32 1/2° E
I		"			Black oak	9	S 8° SW 1.
J		"			Sugar	12	N 58 1/2° W 2
K		stone			Sleepy Elm	5	N 32 1/2° W 4
L					Groshwood	8	N 59 1/2° E
M					Sugar	12	S 23 1/2° W 9
N					W. Oak	16"	S 36° E 3
O					Hickory	5"	S 3° W 2
P					W. Oak	24"	S. E 3.
<p><i>Gilbert + Blunk</i></p> <p style="text-align: center;">7-21-49</p>	X	1" square iron bar 3' + 11" N. of O			True dogwood	5"	S. 40° E 5.
	TT	old stone			ELM	12"	N. 6° W. 7.7
					Poplar	8	S. 5° W 17.
					True OAK	4	SW 9.
<p><i>Smith & Blunk May 1951</i></p> <p>for Villa Troich</p>	m.	Stake 5ch North M			Twin oak	24"	S. 65° W 13.
	x	Stake 6ch east of m			Sugar 0'	6"	North 15'
	l	Stake 6ch South x			Beech B. Oak	20" 5"	S. W 20' N. W. 16'
<p style="text-align: center;">CANATSEY</p> <p><i>J. A. Blunk-10-11-54</i></p> <p><i>i 5300 on East of l.</i></p> <p>SEE END OF SURVEY</p> <p>3-10-1954</p> <p style="text-align: center;">R.F.S. /</p>	E.	Stone			BEECH	18"	N. 6° E. 14
	i	stone			"	16"	S. 56° E 24
					Poplar	10"	N. W. 13
					OAK	18"	N. E. 25

RECORD OF SURVEYS IN MORGAN COUNTY, INDIANA.

Section **1** Township **12N** North, Range **1W**

REMARKS, &c., &c.	Corners.	Stone Mark.	Acres.	Hun.	Bearing Trees.	Diam.	Courses.	Dist.	
	C	STONE			MAPLE	10"	S12W	25'	
					P. HICKORY	15"	N10W	27.72'	
					SE COR. HOUSE		S80W	35'	
		E	STONE			TW W. OAK	18"	N	43'
					TW HICKORY	3"	N65W	18.5'	
		L	STONE			HICKORY	12"	N10W	9.5'
					B. OAK	24"	S75W	24.5'	
		D	STONE			BEECH	9"	S65W	17.6'
					HICKORY	8"	N80E	3.6'	
					W OAK	24"	N	21.1'	
	B	STONE			W OAK	18"	N55W	19.5'	
				B OAK	24"	S30W	20.9'		
				W. OAK	18"	N60E	13.6'		
	M	STONE			Poplar	20"	40° S.	48 ft	
				Aspen	8"	S60 W	28.6"		
	O	STONE			SHELL HICKORY	10"	N25 W	33.6'	
				SPICE HICKORY	14"	S75 E	44.8'		
				W OAK	9"	S20 W	16.3"		
	V	SEE	SEC	12-A					
	X	SEE	SEC	12-C					
	Y	SEE	SEC	12-D					

JUNE 1982 - R.L. McCracken Co. Surveyor
 E to Z = 5505.99 feet, ~~Assumed~~
 Z to P = 2663.11
 Z to Q = 1331.56
 Point Q established by single proportionate measurement
 Azimuth E to Z = 180-39-44 assumed
 Party Chief - Bob Griffin,
 Tom Paul, B. Cunningham,
 N. McCracken

Z	Set CONC. MON w/ IRON Rebar	CONC. MON. w/ IRON	Mag. bearing	feet
			542 W	50.41
P	Set CONC. MON w/ IRON	CONC. MON. w/ IRON	Mag. bearing assumed * S 64-23-51 E	46.18
			501-24-06 W assumed *	40.90
			N 11-44-30 E assumed	20.68
			PK Nail in Power Pole assumed	49.56
E	STONE Found	CONC. MON. w/ IRON	NORTH MAGNETIC	12.85
A	Found STONE	CONC. MON. w/ IRON	S 25 W mag. ber.	4.58
			532 W (Mag)	20.0
			CONC. MON. " NORTH (MAG)	16.4
			CONC. MON. " assumed	27.84
			S 33-51-47 E assumed	55.69
			CONC. MON. " N 29-06-24 W	55.69

SEE 4 PAGES FOLLOWING

Feet T12N R1W

1100 R 1 7/8" I.P. - 12" BLACK GRK STOW 0' 3 1/2"
8" SOFT W/IDE W45W 4' 3"
7" BLEACH SYKE 2' 10"

1100 W SEE SEC 12 "R"

1100 1. 1" I.P. SOUTH OF "L" = END ON TURNING
LINE IN 1/4 BRADYMAN RD. - 55' 1/2' ON
OF STONE - 9" BLACK WALNUT 5' 4' 7"
- CORNERPOST SP2W 19' 11"
- UTILITY POLE 1170E 2' 10"
(POLE 434 27-12 16)

1982 V Found
STONE w/ Rebar
Beside. Stone is
in Root System of
Beech Tree

CONC. MON
w/IRON
NIDE
13.84'
CONC. MON.
w/IRON
570E
15.49'

RECORD OF SURVEYS IN MORGAN COUNTY, INDIANA.

Section 2 Township 12 North, Range 1 West

REMARKS, &c., &c.	Corners.	Stone Mark.	Acres.	Hun.	Bearing Trees.	Diam.	Courses.	Dist.		
<p style="text-align: center;">By J. J. Cogland</p>	At	Stone			Poplar stump	30	S 41° E	44		
	"	"			Ush	3	S 87° E	7		
	"	"			Oak	3	N 77° W	9		
	"	"			Beech	20	N 53 1/2° E	37		
	"	"			N Oak	30	S 68 1/2° W	30		
	"	"			Beech	10	S 80° E	38		
	"	"			R Oak	3	S 82 1/2° W	20		
	"	"			Beech	18	S 51 1/2° W	39		
	"	"			W Oak	16	N 5° W	3		
	"	"			Beech	12	N 54° E	6		
	"	"			"	16	N 28° W	14		
	"	"			"	10	S 21 1/2° W	50 1/2		
	"	"			Scruboak	6	S 82° E	30		
	"	"			Hickory	3	S 18 1/2° E	55		
	"	"			Beech	12	N 30° W	49		
<p style="text-align: center;">E. A. Bourne Jan. 10th 1880</p> <p style="text-align: center;">April 16th 1880</p>	"	Stone x			B. Gum	10	S 81° W	16		
	"	"			Oak	4	S 70 1/2° E	19		
	"	"			Beech	8	N 18° E	13 1/2		
	"	"			"	12	S 9° W	16		
	"	"			"	22	N 57 1/2° E	68		
	<p style="text-align: center;">Survey for Miller Keowen et al Apr. 28th 1886 G. W. Pearce Surveyor</p>	"	Stone	err 2 rods E. of		B. W Oak				
		"	"	29 rods S of		Large Boulder		S 68 1/2° E	88	
		<p style="text-align: center;">H. C. Blunk, D. R. 10-1912</p>	"	Stone			Beech	15	N 87° W	35
			"	"			Hickory	9	S 67 1/2° W	20
			"	"			Black Oak	12	N 72° W	40
<p style="text-align: center;">Survey for J. N. Porter W. F. Smith Co. Surveyor. June 15-51 R. A. Blunk & A. Reeves Ass'ts</p> <p style="text-align: center;">i is 14 ch south of c and 14.49 west of K b is 7.25 chs S-2° E of a</p>	"	"			Beech	14	S 12° W	35 1/2		
	"	"			White Oak	7	N 4 1/2° W	18		
	"	"			Hickory		N 14° W	17		
	"	"			1/2" PIPE 14.00 ch West of Sec. Cor.	Perommon	10"	S-E	25 1/2	
	"	"			"	"	6"	N-E	18 1/2	
	"	"			1" Iron Shaft		S 2° E, 7.25 ft from a.			
	"	"			" " "		30 LKS West of b			
"	"			" " "		White Oak 12" south		10 1/2		
"	"			" " "		3" North		3		
"	"			" " "		1 1/2" East		1		

RECORD OF SURVEYS IN MORGAN COUNTY, INDIANA. ¹⁴

Section 2 Township 12 North, Range 1 West

REMARKS, &c., &c.	Corners.	Stone Mark.	Acres.	Hun.	Bearing Trees.	Diam.	Courses.	Dist.
By Wilbur F Smith Co. Surveyor June 26 1952 								
	X	3/4 PIPE			Twin poplar 24" N. 70° W		4 ft.	
	B.	Rod - B. to a			Hickory 6" S. 15° W		11'-2"	
					= 6.00 ch.			
	'68 O	STONE			W OAK	15"	N 28° E	7.25'
					W OAK	20"	S 24° W	13.1'
					W OAK	8"	E	20.75'
	'68 R	IRON PIPE			R OAK	12"	E	15.51'
					BEECH	8"	N 18° E	8.8'
					R. OAK	10"	N 45° E	5.0"
					BEECH	12"	S 9° W	10.8'
					BEECH	12"	S 20° W	21.8'
	'68 N				MAPLE	14"	S 5° W	50.0'
					RED MAPLE	46"	EAST	28.4'
					RED OAK	16"	N 5° W	24.0'
	P	3/4 IRON PIPE			BEECH	24"	N 30° W	14.2'
					R-OAK	14"	S 80° E	26.8'
					R-OAK	18"	N	43'
	F	3/4 PIPE			Hickory	12"	N 75° E	13.3'
					MAPLE	3"	S 40° E	18.5'
	G	3/4 PIPE			R-OAK	12"	N 60° W	28'
					Hickory	6"	N 30° E	10.6'
RR SPIKE 716 S. OF O								
No. IRM →	A OK	SEE	SEC 1-E					
	C	SEE SEC	35-X	T 13 N R 1 W				
	X	1" IRON PIPE			SHELL HICKORY	10"	S 15° W	11'2"
					TW R OAK		W	39.5"
					MAPLE	10"	N 5° W	11'9".0"
	R ALSO				R OAK	10"	N 45° E	5.0'
					R. OAK	12"	E	15.5"
					BEECH	12"	S 20° W	21'0"
	Y	SEE SEC	11 "D"					
	L	SEE SEC	1- "P"					
SEE PAGES FOLLOWING								

R/W

T/2N

SEC 2.

✓ SEE SECTION 1/2"

U SEE SECTION 1/8"

RECORD OF SURVEYS IN MORGAN COUNTY, INDIANA.

Section 3 Township 12 North, Range West ^{1st}

REMARKS, &c., &c.	Corners.	Stone Mark.	Acres.	Hun.	Bearing Trees.	Diau.	Courses.	Dist.
<p>By <i>EW Pearce</i> <i>By H. G. Bell</i> P. 113</p>		<i>at C Stone</i>			<i>Sugar</i>	4	N 65° W	18.2
					<i>B Walnut</i>	6	N 68° E	48.3
					<i>White Oak</i>	4	N. 48° W.	18.2
					<i>Sour Oak</i>	12	N 19° W	24.6
					<i>B Walnut</i>	15	N. 56° E	18.83
					"	5	S. 55° W	27.32
					<i>Beech</i>	18	N. 79° W	40.6
					<i>W. Oak</i>	18	N. 45° E	39. "
					<i>Stone on SW side of 300 ft</i>	10	N. 17° W	30 L
					" <i>Mulberry</i>	12	N 31 1/2° E	36 L
				<i>d Stake</i>	8	N. 74° E	30 ft	
				<i>Lapstone</i>		West	58.33 ft	
				<i>T. old stone</i>	18	NE	7. ft	
				" "	6	SW	2.08'	
				<i>Y. old stone & pipe</i>	8	East	8 L	
				" "	20	NW	30 L	
<i>Canatsey - Nov. 10. 1953</i>								
					<i>WALNUT</i>	15"	N 86° E	18' 10"
					<i>TW. SHELL HICKORY</i>	10"	N 75° W	29' 10"
					<i>ASH</i>	14"	S 20° E	25' 7"
					<i>B OAK</i>	15"	N 15° E	8' 6"
					<i>W. OAK</i>	10"	WEST	33.45'
					<i>HICKORY</i>	12"	S 30° W	39.5'
					<i>W. OAK</i>	15"	S 85° E	13.0'
					<i>NE COR. HOUSE</i>			99.7'
					<i>L</i>			<i>SEE SEC 2-P</i>
					<i>K</i>			<i>SEE SEC 2-F</i>

RECORD OF SURVEYS IN MORGAN COUNTY, INDIANA.

Section 3 Township 12 North, Range 1 West

REMARKS, &c., &c.	Corners.	Stone Mark.	Acres.	Hun.	Bearing Trees.	Diam.	Courses.	Dist.
<div style="text-align: center;">By J. H.</div>	At A	Stone			Beech	10	S 50 E	28
	" E	"			"	—	N 56 W	32
	" F	"			"	18	N 86 W	12
	" G	"			Sugar	—	N 46 E	10
	" H	"			S Oak	5	S 1 1/2 W	31
	" I	"			Poplar	4	West	33
	" J	"			Beech	10	N 47 W	18
	" K	"			S Oak	30	S 57 E	44
	" L	"			Beech	20	S 41 E	32
	" M	"			N Walnut	12	N 5 E	—
	" N	"			Beech	10	S 21 E	14
	" O	"			"	12	S 16 W	31
	" P	"			N Oak	10	South	35
	" Q	"			"	10	N 44 W	68
	" R	"			Beech	8	N 72 W	12
	" S	"			"	4	S 51 W	49
	" T	"			W Oak	24	S 43 E	42
	" U	"			Beech	8	N 53 1/2 W	27
	" V	"			"	20	N 83 E	22
	" W	"			"	12	S 86 W	22
" X	"			N Walnut	8	S 61 E	95	
" Y	"			Beech	3	N 46 W	147	
" Z	"			S Oak	5	S 44 E	10	
" a	"			Lynx	8	N 31 W	34	
" b	"			Beech	6	N 55 W	32	
" c	"			"	3	East	35	
" d	"			East apple	4	South	12	
" e	"			W Oak	3	S 20 E	134	
" f	"			Beech	10	S 58 E	40	
" g	"			"	20	N 45 E	37	
" h	"			S Oak	10	N 9 1/2 W	17	
" i	"			Maple	6	S 15 W	6	
" j	"			Beech	3	S 21 E	16	
" k	"			"	4	N 71 E	22	
" l	"			"	12	N 71 E	57	

RECORD OF SURVEYS IN MORGAN COUNTY, INDIANA.

Section 4 Township 12 North, Range 1 West

REMARKS, &c., &c.	Corners.	Stone Mark.	Acres.	Hun.	Bearing Trees.	Diam.	Courses.	Dist.
	W B	Stru			Beech	12	S 73 W	59
	" N	" 74			"	8	S 32 E	23
	" E	" cor			Hickory	5	N 18 E	27 1/2
	" G	" " I. 12 R			Beech	20	S 81 E	57 1/2
	" J	" " I. 12 R			"	12	N 42 W	24
	" L	" " I. 12 R			W. Beech	2	N 8 E	30
	" M	" " I. 12 R			"	4		
	" O	" " I. 12 R			Korubram	4	N 30 E	3
	" Q	" " I. 12 R			Beech	3	S 13 W	22
	" R	" " I. 12 R			Korubram	4	S 36 W	18
	" S	" " I. 12 R			Lynn	20	N 67 W	16
	" T	" " I. 12 R			Beech	12	S 72 E	29
	" U	" " I. 12 R			Oak	8	S 23 W	17
	" V	" " I. 12 R			Beech	8	N 72 W	12
		" W	" 78		"	4	S 51 W	49
	" X	" 78		Hickory	6	N 53 W	40	
	" Y	" 78		"	4	N 75 E	12	
	" Z	" 78		Stru		West	50	
	" A	" 78		Beech	8	N 14 W	20	
	" B	" 78		Dogwood	6	N 22 E	45	
	" C	" 78		Oak	12	N 24 W	70	
	" D	" 78		"	5	N 63 E	44	
	" E	" 78		Beech	20	East	62 1/2	
	" F	" 78		"	5	S 10 W	11	
	" G	" 78		Sugar	16	S 53 W	10	
	" H	" 78		Beech	10	S 46 W	23	
	" I	" 78		"	10	N 18 W	22	
	" J	" 78		"	4	S 46 W	19	
	" K	" 78		Dogwood	8	N 52 E	29	
	" L	" 78		Oak	3	S 56 E	35	
	" M	" 78		Dogwood	4	S 40 E	37	
	" N	" 78		Hickory	4	N 70 E	50	
	" O	" 78		Oak	9	N 2 W	47	
	" P	" 78		Sugar	15	S 39 1/2 E	66	

E. A. Bourne

RECORD OF SURVEYS IN MORGAN COUNTY, INDIANA.

Section 4 Township 12 North, Range 10 West

REMARKS, &c., &c.	Corners.	Stone Mark.	Acres.	Hun.	Bearing Trees.	Diam.	Courses.
By G.W. Pearce Sept. 1885	At a	26 rods W of stone em. stone					N 17° E 1
	" B	16 rods W of a "		" "	" "		N 78° E 1
	" C	26 rods W of "		" "	Beech	10	North East 1
	" D	16 rods W of "		" "	"	18	235 W 3
	" E	16 rods W of "		" "	"	24	265 E 3
	" F	16 rods W of "		" "	"	24	272 E 7
	" G	stone			W. Oak	10	2-12-45-
	" H	stone			Beech	12	N. 50 E 3
	" I	stone			B. Oak	18	N 12 W 3
	" J	stone			W oak	10	S. 33 1/2 W 3
	" K	stone					N. 84 E 3
	at L	SEE SEC	3-P				
	P	SEE SEC	5-L				
	E	SEE SEC	5-A"				
	F	SEE SEC	5-K"				
	Q	SEE SEC	5-U				
For ... survey	O	STONE (1" 1/4 OVER)			B. W	25"	N 72 E
					"	18"	South
					W. Oak	7"	N 60 E
	G	STONE (3/4" 1/4 OVER)			POPLAR	5"	N 45 E
					MARSH	3"	
					SPIRIT	12"	
	K	SEE SEC	3 "F"				

RECORD OF SURVEYS IN MORGAN COUNTY, INDIANA.

Section 5 Township 12 North, Range West

REMARKS, &c., &c.	Corners.	Stone Mark.	Acres.	Hun.	Bearing Trees.	Diam.	Courses.	Dist.
By M ^c Nabbs	A M				Poplar	48	N 74 W	11 1/2
	"	O			Ash	5	N 18 E	9
	"	X			Sugar	12	N 54 E	34 1/2
	"	Y			W Walnut	3	N 8 W	36
	"	Z			Beech	18	S 29 W	66
	"	A			Sugar	32	N 39 E	24
	"	B			Beech	20	S 10 W	10
	"	C			"	12	N 10 E	15
	"	D			"	20	N 55 W	19 1/2
	"	E			"	7	N 29 E	14
	"	F			"	22	N 18 W	28
	"	G			"	12	N 55 E	75
	By Can Haase - Oct. 1915	"	S			stru		West
Wilbur F Smith Nov. 19 51	"	T			"		East	27
	"	X	(re-witnessed) stake		Elm	7	S 88 E	11 1/2
	"	Y			R. Oak	5	S 24 W	26
	"	Z			Sycamore	13	S 35 1/2 W	26
	"	A			Hickory	11	N 68 3/4 E	36
	"	B			Elm	16	S 30 W	45
'68	E	STONE			CEDAR	14"	N 45 W	21.9
					ASH	7"	S 15 E	15.6
					W CHERRY	24"	N 70 E	32.0
'68	Z	10" FLAT STONE ON TOP			ASH	8"	N 80 E	4.4
					R OAK	20"	S 70 E	32.2
					R OAK	20"	N 10 W	24.
'68	L	STONE MARK (OVER)		1 1/2" IRON PIPE	SHED HICK	9"	SE	12
					ELM.	6"	N 45	27
					R. OAK	12	S 10 W	42
1967	X	IRON PIPE						
1967	N	1" IRON PIPE - (ALSO # 1") (WARD PIPE)			1" IRON PIPE (BENT OVER)		N	18
					CORNER POST		SE	27
					CORNER POST		SW	27

RECORD OF SURVEYS IN MORGAN COUNTY, INDIANA.

Section **5** Township **12** North, Range **1W**

REMARKS, &c., &c.	Corners.	Stone Mark.	Acres.	Hun.	Bearing Trees.	Diam.	Courses.
	68	S			RR SPIKE IN AD.		586E 10
		U	1" PIPE			3/8" IRON ROD 1" IRON PIPE	WEST 10
		A	LARGE STONE			HICKORY 14" HICKORY 6"	SOUTH 3 NSW 2
		K				BEECH 14" SPICE HICK 7"	N24W S30E
		A				W. OAK 6"	N74E 1
		K	STONE (1" PIPE OVER)			TW RED OAK 20" R. OAK 16" W. OAK 12"	N W S

RECORD OF SURVEYS IN MORGAN COUNTY, INDIANA.

Section 6 Township 12 North, Range 1 West

REMARKS, &c., &c.	Corners.	Stone Mark.	Acres.	Hun.	Bearing Trees.	Diam.	Courses.
<p style="text-align: center;">By M^e Nabb</p> <div style="display: flex; align-items: center; justify-content: center;"> </div>	A G				Beech	10	S 87 E 4
	" H				"	14	S 27 W 2
	" D				Hickory	3	N 67 W 1
	" M				Elm	5	S 10 W 6
	" G				Beech	18	N 23 E 1
	" J				"	8	N 88 W 1
	" E				"	8	South 6
	" I				W Beech	7	N 25 E 2
	" K				Hickory	4	N 44 W 1
	" F				"	4	S 50 W 3
<p style="text-align: center;">By J Hadley</p>	" P				Poplar	18	N 50 E 6
	" Q				Beech	3	S 66 E 7
	" R				"	6	S 84 W 2
	" S				"	12	N 3 E 3
	" T				Hickory	3	S 64 E 6
	" U				Dogwood	4	N 60 E 6
	" V				Ironwood	4	S 32 W 2
	" W				"	3	N 80 E 11
	" X				stone		N 53 1/2 W 5
	" Y				"		N 21 E 3
<p style="text-align: center;">C. G. H. Foss Survey for E. E. Murphy + N. Dawson Oct 22nd 1891</p>	" Z				Poplar	15	S 83 E 6
	" A				Hickory	13	S 13 1/2 E 6
	" B				Poplar	3	N 83 E 4
	" C				"	18	N 73 E 8
	" D				"	10	S 31 E 8
	" E				"		N 48 W 3
	" F				"		N 21 E 3
	" G				"	14"	N 8 1/2 E 10
	" H				"	18"	S 77 1/2 W 11
	" I				"		N 27 E 1
<p style="text-align: center;">H. A. Blunk Jan 7-1920 Survey for Hubbard River Co.</p>	" J				"		S 32 1/2 E 1
	" K				"		

RECORD OF SURVEYS IN MORGAN COUNTY, INDIANA.

Section *6*

Township

North, Range

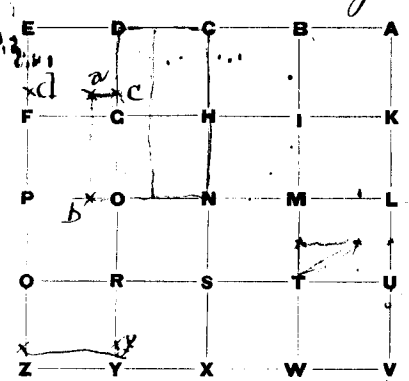
REMARKS, &c., &c.	Corners.	Stone Mark.	Acres.	Hun.	Bearing Trees.	Diam.	Courses.
	<p style="font-size: 2em; margin: 0;">A</p> <p style="font-size: 2em; margin: 0;">V</p> <p style="margin: 0;">E</p>	<p style="margin: 0;"><i>SEE</i></p> <p style="margin: 0;"><i>SEE</i></p> <p style="margin: 0;">"</p>	<p style="margin: 0;"><i>SEC</i></p> <p style="margin: 0;"><i>SEC</i></p> <p style="margin: 0;">"</p>	<p style="margin: 0;"><i>5-E</i></p> <p style="margin: 0;"><i>5-2</i></p> <p style="margin: 0;">"</p>	<p style="margin: 0;"><i>1 "A" 7/20</i></p>	<p style="margin: 0;"><i>2 W</i></p>	

RECORD OF SURVEYS IN MORGAN COUNTY, INDIANA.

Section 7

Township 12

North, Range 1 West

REMARKS, &c., &c.	Corners.	Stone Mark.	Acres.	Hun.	Bearing Trees.	Diam.	Courses.
<p>By H. J. Craig</p>  <p>J. Hadley B. J. Butler</p>	At F. Stone cor.				stone		25.4 W 35
	" G " 74				"		N 54 E 36
	" M " cor.				Beech	3	S 38 E 51
	" B " "				Ash	10	N 14 E 51
	" D " "				Beech	22	S 64 W 2
	" P " 74				W. Oak	6	N 14 E 15
	" O " "				"	36	S 24 W 15
	" B " "				Maple	4	N 75 W 31
	" D " "				Hickory	3	S 61 E 25
	" P " 74				N. Beech	4	S 22 E 13
	" O " "				Ash	7	N 85 E 12
	" B " "				"	4	S 78 E 36
	" D " "				W. Oak	4	N 25 E 4
	" P " "				"	5	N 9 W 40
	<p>By Can Haase - July 1916</p> <p>(a is 9.87 ch. S. and 1.62 ch. West of D.) (c is 9.87 ch. South of D.) (b is 1.62 ch. West of O.)</p> <p>By Vincent Smith Sept 22 - 1936</p> <p>5 Acres off land of West 1/2 of S.W. fractional quarter. 3.51 ch North S. by 14.30 ch E. 2.11 W</p>	" B " "				Maple	18
" a " "					Elm	6	S 89 W 32
" c " "					G. Ash	13	N 29 W 7
" d " "					do.	7	N 36 3/4 E 16
" P (reintroduced)					Beech	18	S 66 3/4 W 15
" E "					W. Oak	8	S 29 E 32
" a " stone re-established					"	12	N 47 W 17
" c " " " "					Hickory	8	S 55 W 41
" b " " " "					Poplar		N. 89 1/4 W. 41
" Z " 3" Non-FM					"	12	S. 67 1/2 W. 39
" J " 1 1/4" Well point					B. Walnut	18	S. 29 E. 31
					Poplar	13	S. 23 W. 32
					G. Ash	14	S. 7 1/2 E. 80
					B. Walnut	9	S. 77 1/2 W. 61
					White Oak	14	N. 48 3/4 E. 11
				stone (con. a)		West 16	
				Hickory	14	N. 63 3/4 E. 7	
				Walnut	2	N. 45 1/2 W. 5	
				E/M	15"	S 80 E	
				maple	8"	S 45 E 6	
				E/M	10"	N 0 E	

RECORD OF SURVEYS IN MORGAN COUNTY, INDIANA.

Section 7

Township 12

North, Range 1W

REMARKS, &c., &c.	Corners.	Stone Mark.	Acres.	Hun.	Bearing Trees.	Diam.	Courses.
	'68 L	□ LIME STONE			BEECH	5"	E 4
					SUGAR	12"	S45E 20
					SUGAR	18"	S10W 10
					SUGAR	16"	W 40
	A	SEP SEC		5-2			
	N	1" IP (BURIED 6")			IRON CORNER POST		E 20
					SW COR FR HOUSE		N50E 30
					UTILITY POLE		N75W 60
	H	1" IRON PIN			ASH	5"	E 20
					W. OAK	24"	W 10
					POPLAR	6"	S5E 10
	M	STONE (1" PIPE OVER)			W. OAK	48"	N14E 10
					SP16 HICK	8"	W 40
					BEECH	22"	S15W 10
					SUGAR	18"	S5E 10
<p style="font-size: 1.2em;">R & M - June 1986</p>	A	6" X 10" Sandstone w/ 1/2"			Conc. Ref. Monuments		
							N89°01'57"E 20
							N20°44'28"E 30
							S21°39'28"E 15
					Oak	2.4'	N02°W 30
					Ash	1.5'	S66°E 40
					Oak	2.3'	S58°E 30
					Tw. Sycamores	3'	S08°W 40

RECORD OF SURVEYS IN MORGAN COUNTY, INDIANA.

Section 8 Township 12 North, Range 1 West.

REMARKS, &c., &c.	Corner.	Stone Mark.	Acres.	Hun.	Bearing Trees.	Diam.	Courses.	Di.
<p style="font-size: 1.2em; margin: 0;"><i>By the Survey</i></p> <p style="margin: 10px 0 0 0;"><i>Surveyed July 2, 1952</i></p>	<i>A</i>				<i>Ironwood</i>	<i>4</i>	<i>S 36 W</i>	<i>77</i>
	<i>"</i>	<i>M stone ex.</i>			<i>Beech</i>	<i>9</i>	<i>N 75 W</i>	<i>46</i>
	<i>"</i>	<i>Z^v stone</i>			<i>"</i>	<i>8</i>	<i>S 50 E</i>	<i>48</i>
	<i>"</i>	<i>W</i>			<i>"</i>	<i>6</i>	<i>N 70 E</i>	<i>72</i>
	<i>"</i>				<i>B. Walnut</i>	<i>10</i>	<i>N 30 E</i>	<i>28</i>
	<i>"</i>				<i>stone</i>		<i>S 24 E</i>	<i>20</i>
	<i>"</i>				<i>W. Oak</i>	<i>12</i>	<i>N 10 W</i>	<i>30</i>
	<i>"</i>				<i>"</i>	<i>10</i>	<i>S 44 E</i>	<i>26</i>
	<i>"</i>				<i>Beech</i>	<i>22</i>	<i>S 49 1/2 W</i>	<i>14</i>
	<i>"</i>	<i>Z</i>	<i>stake</i>		<i>E 1 M</i>	<i>14"</i>	<i>S E.</i>	<i>17</i>
	<i>"</i>		<i>old</i>		<i>E 1 M</i>	<i>6"</i>	<i>N. W</i>	<i>11</i>
	<i>"</i>	<i>P.</i>	<i>stone (1)</i>		<i>Sugar</i>	<i>12"</i>	<i>S 10 W</i>	<i>20</i>
	<i>"</i>				<i>Sugar</i>	<i>12"</i>	<i>West</i>	<i>5</i>
	<i>"</i>	<i>V</i>	<i>STONE</i>		<i>SUGAR</i>	<i>8"</i>	<i>EAST</i>	<i>10</i>
	<i>"</i>				<i>SUGAR</i>	<i>4"</i>	<i>N 80 W</i>	<i>27.</i>
<i>"</i>				<i>P. HICKORY</i>	<i>10"</i>	<i>S 40 W</i>	<i>32.</i>	
	<i>U</i>	<i>SEE</i>	<i>SEC</i>					
	<i>E</i>	<i>SEE</i>	<i>SEC</i>	<i>5-X</i>				
	<i>P</i>	<i>SEE</i>	<i>SEC</i>	<i>5-2</i>				
		<i>SEE</i>	<i>SEC</i>	<i>7-L</i>				

RECORD OF SURVEYS IN MORGAN COUNTY, INDIANA.

Section 8 Township 12 North, Range 1 West,

REMARKS, &c., &c.	Corners.	Stone Mark.	Acres.	Inn.	Bearing Trees.	Diam.	Courses.	In.																									
<p style="font-size: 1.2em; margin-bottom: 10px;">By <i>H. J. Craig</i></p> <div style="text-align: center;"> <table style="border-collapse: collapse; margin: auto;"> <tr><td style="padding: 2px;">E</td><td style="padding: 2px;">D</td><td style="padding: 2px;">C</td><td style="padding: 2px;">B</td><td style="padding: 2px;">A</td></tr> <tr><td style="padding: 2px;">F</td><td style="padding: 2px;">G</td><td style="padding: 2px;">H</td><td style="padding: 2px;">I</td><td style="padding: 2px;">K</td></tr> <tr><td style="padding: 2px;">P</td><td style="padding: 2px;">O</td><td style="padding: 2px;">N</td><td style="padding: 2px;">M</td><td style="padding: 2px;">L</td></tr> <tr><td style="padding: 2px;">O</td><td style="padding: 2px;">R</td><td style="padding: 2px;">S</td><td style="padding: 2px;">T</td><td style="padding: 2px;">U</td></tr> <tr><td style="padding: 2px;">Z</td><td style="padding: 2px;">Y</td><td style="padding: 2px;">X</td><td style="padding: 2px;">W</td><td style="padding: 2px;">V</td></tr> </table> <p style="font-size: 0.8em; margin-top: 5px;">H. J. B. Book 9-22-44</p> <p style="margin-top: 10px;">Canatoxy, July 27, 1956</p> </div>	E	D	C	B	A	F	G	H	I	K	P	O	N	M	L	O	R	S	T	U	Z	Y	X	W	V	At Z				Ironwood	4	S 36 W 77	
	E	D	C	B	A																												
	F	G	H	I	K																												
	P	O	N	M	L																												
	O	R	S	T	U																												
	Z	Y	X	W	V																												
	" M stru err.	"				Beech	4	N 75 W 46																									
	" Z ^v stru	"				" "	8	S 50 E 48																									
	" W "	"				" "	6	N 70 E 72																									
	Z Stake	Z				B. Walnut	10	N 30 E 28																									
	old stone	P				stru		S 20 E 20																									
	'68	V				W. Oak	12	N 10 W 30																									
	STONE	V				" "	10	S 40 E 26																									
	SEE SEC	C				Beech	22	S 49 1/2 W 14																									
	SEE SEC	E				ELM	14"	S E.	17																								
SEE SEC	E				ELM	6"	N. W	5																									
SEE SEC	P				Sugar	12"	S 10 W	20																									
					SUGAR	12"	West	5																									
					SUGAR	8"	EAST	10																									
					SUGAR	4"	N 80 W	27																									
					P. HICKORY	10"	S 40 W	32																									

RECORD OF SURVEYS IN MORGAN COUNTY, INDIANA.

Section 9 Township 12 North, Range 1 West

Dist. #.	Course.	Diam.	Bearing Trees.	Inn.	Acres.	Stone Mark.	Corners.	REMARKS, Accy, &c.
30	N 68 W	21	30'				CA M	By Mr. Ruggins
18	S 69 E	43'					A	By Mr. Ruggins
5	N 75 E	12					B	By Mr. Ruggins
6	N 71 W	30'					C	By Mr. Ruggins
8	N 73 W	43'					D	By Mr. Ruggins
16	S 50 E	37'					E	By Mr. Ruggins
16	S 50 E	37'					F	By Mr. Ruggins
16	S 50 E	37'					G	By Mr. Ruggins
16	S 50 E	37'					H	By Mr. Ruggins
16	S 50 E	37'					I	By Mr. Ruggins
16	S 50 E	37'					J	By Mr. Ruggins
20	N 31 W	26'					K	By Mr. Ruggins
6	S 22 E	47'					L	By Mr. Ruggins
18	N 64 E	29'					M	By Mr. Ruggins
8	N 92 W	97'					N	By Mr. Ruggins
8	N 72 W	83'					O	By Mr. Ruggins
12	N 75 E	68'					P	By Mr. Ruggins
6	N 21 W	51'					Q	By Mr. Ruggins
8	N 72 W	88'					R	By Mr. Ruggins
8	N 92 E	192'					S	By Mr. Ruggins
14	N 32 W	55'					T	By Mr. Ruggins
15	N 15 E	67'					U	By Mr. Ruggins
5	N 87 E	89'					V	By Mr. Ruggins
15	N 15 E	67'					W	By Mr. Ruggins
16	N 15 E	67'					X	By Mr. Ruggins
16	N 15 E	67'					Y	By Mr. Ruggins
16	N 15 E	67'					Z	By Mr. Ruggins
12	N 57 E	68'					AA	By Mr. Ruggins
6	N 57 E	68'					AB	By Mr. Ruggins
6	N 57 E	68'					AC	By Mr. Ruggins
6	N 57 E	68'					AD	By Mr. Ruggins
6	N 57 E	68'					AE	By Mr. Ruggins
6	N 57 E	68'					AF	By Mr. Ruggins
6	N 57 E	68'					AG	By Mr. Ruggins
6	N 57 E	68'					AH	By Mr. Ruggins
6	N 57 E	68'					AI	By Mr. Ruggins
6	N 57 E	68'					AJ	By Mr. Ruggins
6	N 57 E	68'					AK	By Mr. Ruggins
6	N 57 E	68'					AL	By Mr. Ruggins
6	N 57 E	68'					AM	By Mr. Ruggins
6	N 57 E	68'					AN	By Mr. Ruggins
6	N 57 E	68'					AO	By Mr. Ruggins
6	N 57 E	68'					AP	By Mr. Ruggins
6	N 57 E	68'					AQ	By Mr. Ruggins
6	N 57 E	68'					AR	By Mr. Ruggins
6	N 57 E	68'					AS	By Mr. Ruggins
6	N 57 E	68'					AT	By Mr. Ruggins
6	N 57 E	68'					AU	By Mr. Ruggins
6	N 57 E	68'					AV	By Mr. Ruggins
6	N 57 E	68'					AW	By Mr. Ruggins
6	N 57 E	68'					AX	By Mr. Ruggins
6	N 57 E	68'					AY	By Mr. Ruggins
6	N 57 E	68'					AZ	By Mr. Ruggins
6	N 57 E	68'					BA	By Mr. Ruggins
6	N 57 E	68'					BB	By Mr. Ruggins
6	N 57 E	68'					BC	By Mr. Ruggins
6	N 57 E	68'					BD	By Mr. Ruggins
6	N 57 E	68'					BE	By Mr. Ruggins
6	N 57 E	68'					BF	By Mr. Ruggins
6	N 57 E	68'					BF	By Mr. Ruggins
6	N 57 E	68'					BG	By Mr. Ruggins
6	N 57 E	68'					BH	By Mr. Ruggins
6	N 57 E	68'					BI	By Mr. Ruggins
6	N 57 E	68'					BJ	By Mr. Ruggins
6	N 57 E	68'					BK	By Mr. Ruggins
6	N 57 E	68'					BL	By Mr. Ruggins
6	N 57 E	68'					BM	By Mr. Ruggins
6	N 57 E	68'					BN	By Mr. Ruggins
6	N 57 E	68'					BO	By Mr. Ruggins
6	N 57 E	68'					BP	By Mr. Ruggins
6	N 57 E	68'					BQ	By Mr. Ruggins
6	N 57 E	68'					BR	By Mr. Ruggins
6	N 57 E	68'					BS	By Mr. Ruggins
6	N 57 E	68'					BT	By Mr. Ruggins
6	N 57 E	68'					BV	By Mr. Ruggins
6	N 57 E	68'					BW	By Mr. Ruggins
6	N 57 E	68'					BX	By Mr. Ruggins
6	N 57 E	68'					BY	By Mr. Ruggins
6	N 57 E	68'					BZ	By Mr. Ruggins
6	N 57 E	68'					CA	By Mr. Ruggins
6	N 57 E	68'					CB	By Mr. Ruggins
6	N 57 E	68'					CC	By Mr. Ruggins
6	N 57 E	68'					CD	By Mr. Ruggins
6	N 57 E	68'					CE	By Mr. Ruggins
6	N 57 E	68'					CF	By Mr. Ruggins
6	N 57 E	68'					CG	By Mr. Ruggins
6	N 57 E	68'					CH	By Mr. Ruggins
6	N 57 E	68'					CI	By Mr. Ruggins
6	N 57 E	68'					CJ	By Mr. Ruggins
6	N 57 E	68'					CK	By Mr. Ruggins
6	N 57 E	68'					CL	By Mr. Ruggins
6	N 57 E	68'					CM	By Mr. Ruggins
6	N 57 E	68'					CN	By Mr. Ruggins
6	N 57 E	68'					CO	By Mr. Ruggins
6	N 57 E	68'					CP	By Mr. Ruggins
6	N 57 E	68'					CQ	By Mr. Ruggins
6	N 57 E	68'					CR	By Mr. Ruggins
6	N 57 E	68'					CS	By Mr. Ruggins
6	N 57 E	68'					CT	By Mr. Ruggins
6	N 57 E	68'					CV	By Mr. Ruggins
6	N 57 E	68'					CW	By Mr. Ruggins
6	N 57 E	68'					CX	By Mr. Ruggins
6	N 57 E	68'					CY	By Mr. Ruggins
6	N 57 E	68'					CZ	By Mr. Ruggins
6	N 57 E	68'					DA	By Mr. Ruggins
6	N 57 E	68'					DB	By Mr. Ruggins
6	N 57 E	68'					DC	By Mr. Ruggins
6	N 57 E	68'					DD	By Mr. Ruggins
6	N 57 E	68'					DE	By Mr. Ruggins
6	N 57 E	68'					DF	By Mr. Ruggins
6	N 57 E	68'					DG	By Mr. Ruggins
6	N 57 E	68'					DH	By Mr. Ruggins
6	N 57 E	68'					DI	By Mr. Ruggins
6	N 57 E	68'					DJ	By Mr. Ruggins
6	N 57 E	68'					DK	By Mr. Ruggins
6	N 57 E	68'					DL	By Mr. Ruggins
6	N 57 E	68'					DM	By Mr. Ruggins
6	N 57 E	68'					DN	By Mr. Ruggins
6	N 57 E	68'					DO	By Mr. Ruggins
6	N 57 E	68'					DP	By Mr. Ruggins
6	N 57 E	68'					DQ	By Mr. Ruggins
6	N 57 E	68'					DR	By Mr. Ruggins
6	N 57 E	68'					DS	By Mr. Ruggins
6	N 57 E	68'					DT	By Mr. Ruggins
6	N 57 E	68'					DV	By Mr. Ruggins
6	N 57 E	68'					DW	By Mr. Ruggins
6	N 57 E	68'					DX	By Mr. Ruggins
6	N 57 E	68'					DY	By Mr. Ruggins
6	N 57 E	68'					DZ	By Mr. Ruggins
6	N 57 E	68'					EA	By Mr. Ruggins
6	N 57 E	68'					EB	By Mr. Ruggins
6	N 57 E	68'					EC	By Mr. Ruggins
6	N 57 E	68'					ED	By Mr. Ruggins
6	N 57 E	68'					EE	By Mr. Ruggins
6	N 57 E	68'					EF	By Mr. Ruggins
6	N 57 E	68'					EG	By Mr. Ruggins
6	N 57 E	68'					EH	By Mr. Ruggins
6	N 57 E	68'					EI	By Mr. Ruggins
6	N 57 E	68'					EJ	By Mr. Ruggins
6	N 57 E	68'					EK	By Mr. Ruggins
6	N 57 E	68'					EL	By Mr. Ruggins
6	N 57 E	68'					EM	By Mr. Ruggins
6	N 57 E	68'					EN	By Mr. Ruggins
6	N 57 E	68'					EO	By Mr. Ruggins
6	N 57 E	68'					EP	By Mr. Ruggins
6	N 57 E	68'					EQ	By Mr. Ruggins
6	N 57 E	68'					ER	By Mr. Ruggins
6	N 57 E	68'					ES	By Mr. Ruggins
6	N 57 E	68'					ET	By Mr. Ruggins
6	N 57 E	68'					EV	By Mr. Ruggins
6	N 57 E	68'					EW	By Mr. Ruggins
6	N 57 E	68'					EX	By Mr. Ruggins
6	N 57 E	68'					EY	By Mr. Ruggins
6	N 57 E	68'					EZ	By Mr. Ruggins
6	N 57 E	68'					FA	By Mr. Ruggins
6	N 57 E	68'					FB	By Mr. Ruggins
6	N 57 E	68'					FC	By Mr. Ruggins
6	N 57 E	68'					FD	By Mr. Ruggins
6	N 57 E	68'					FE	By Mr. Ruggins
6	N 57 E	68'					FF	By Mr. Ruggins
6	N 57 E	68'					FG	By Mr. Ruggins
6	N 57 E	68'					FH	By Mr. Ruggins
6	N 57 E	68'					FI	By Mr. Ruggins
6	N 57 E	68'					FJ	By Mr. Ruggins
6	N 57 E	68'					FK	By Mr. Ruggins
6	N 57 E	68'					FL	By Mr. Ruggins
6	N 57 E	68'					FM	By Mr. Ruggins
6	N 57 E	68'					FN	By Mr. Ruggins
6	N 57 E	68'					FO	By Mr. Ruggins
6	N 57 E	68'					FP	By Mr. Ruggins
6	N 57 E	68'					FQ	By Mr. Ruggins

RECORD OF SURVEYS IN MORGAN COUNTY, INDIAN

Section **9** Township **12** North, Range **1**

15
 23
 13
 11
 10
 9
 8
 7
 6
 5
 4
 3
 2
 1
 Ca
 A

REMARKS, &c., &c.	Corners.	Stone Mark.	Acres.	Hun.	Bearing Trees.	Diam.
<div style="display: flex; justify-content: space-around; font-weight: bold;"> EDCBA </div> <hr/> <div style="display: flex; justify-content: space-around; font-weight: bold;"> FGHIK </div> <hr/> <div style="display: flex; justify-content: space-around; font-weight: bold;"> PONML </div> <hr/> <div style="display: flex; justify-content: space-around; font-weight: bold;"> QRSTU </div> <hr/> <div style="display: flex; justify-content: space-around; font-weight: bold;"> ZYXWV </div>	<p>at E</p> <p>Z</p> <p>Roll H</p> <p>Roll I</p> <p>Stone N</p> <p>Stone G</p> <p>Stone T</p> <p>Stone K</p> <p>9</p>	<p>SEE SEC 5-V</p> <p>SEE SEC 8-V</p> <p>1" I.P. 1" High</p> <p>1" I.P. 8" HIGH</p> <p>1/2 I.P.</p> <p>STONE 1" I.P. over</p> <p>STONE</p> <p>STONE</p> <p>STONE</p> <p>1" I.P. over Stone has clear X 15.6' x 6'</p>			<p>Maple</p> <p>Spig Hickory</p> <p>Spig Hickory</p> <p>Shall Hickory</p> <p>Red Oak</p> <p>Red Oak</p> <p>Paper 1/2 I.P. Utility Pole Walnut T. B. Oak W. Oak</p> <p>W. Oak</p> <p>Tw Oak Sassafras Wood</p> <p>SE corner Oak</p> <p>Oak</p> <p>Ref. Mon A Ref. Mon B Ref. Mon C</p>	<p>6" N</p> <p>5" S</p> <p>4" S</p> <p>9" S</p> <p>9" N</p> <p>12" N</p> <p>14</p> <p>12</p> <p>11</p> <p>9</p> <p>11</p> <p>12</p> <p>11</p> <p>A B C</p>

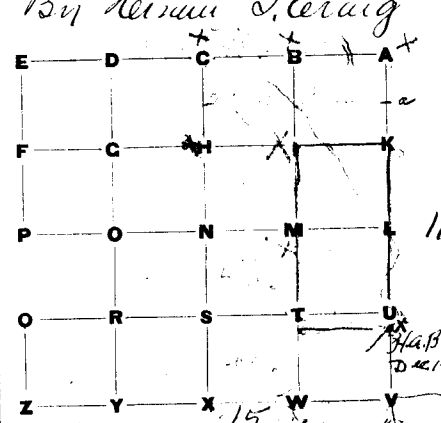
Found 6-83
 Reg McCracken Recorded 2-87

RECORD OF SURVEYS IN MORGAN COUNTY, INDIANA.

Section 10 Township 12 North, Range 1 West.

RI	REMARKS, &c., &c.	Corners.	Stone Mark.	Acres.	Hun.	Bearing Trees.	Diam.	Courses.	D
By	By Heiman J. Craig	at B.				Beech	20	N 23 W 31	
E - D						"	9	N 88 E 61	
F - C		"	to stone cor.			"	30	S 77 E 19	
P - O		"	M ch			"	24	S 64 W 16	
O - R		"	"			U. Oak	11	N 13 E 14	
Z - Y		"	"			B Oak	12	S 69 W 14	
		"	"			Cherry	8	S 64 E 28	
		"	L Stone Engraved.			Quaking asp	2	N 35 W 21	
		"	Y perpetuated			ash	6"	S 10 1/2 W 31	
		"	H. B. B. h. D. 12-14-77			Sugar	18"	N 55 W 11	
Canal	W. lower 7 limits of 1-1955	A-K-L and U				same as E.F. p. 2 and 3			
	Morgan Co 1-1955	X	stone 20 Rod S. 1/4			White oak	8"	S 34 W 11	
	9-1/2 dist A-K	a	stone			Sugar	0"	N 31 W 11	
						B. Oak	10"	N 3 E 11	
						Beech	20"	S 18 1/2 W 11	
		'68	V			STONE			
						BEECH	10"	NORTH	11
						W ORK	8"	S 73 W 11	11
						TW. BEECH	12"	S 85 W 21	21
			Z			SEE SEC 9-V			
			K			SEE SEC 11-F			
			Y			STONE 3/4" IP beside 1/2" S. 1/4			
	R. Holloway 70					Spice Hickory	12"	N 30 W 11	11
						Ash	14"	N 45 E 11	11
						Ash	14"	South 11	11
			F			SEE SEC 9-K			

E - D
F - C
P - O
O - R
Z - Y
Z - Y



Canal
W. lower 7 limits of 1-1955
Morgan Co 1-1955
9-1/2 dist A-K

R. Holloway 70

RECORD OF SURVEYS IN MORGAN COUNTY, INDIANA.

Section 11 Township 12 North, Range West

REMARKS, &c., &c.	Corners.	Stone Mark.	Acres.	Hun.	Bearing Trees.	Diam.	Courses.	Dist.
<p style="font-size: small;">E O B Apr. 16. 1880 Killett 40' 17500 20' 40' C-1/2 distance between E and F J-1/2 distance between J and K</p>	At 2	Stone			Buckeye	2	S 50 E	33
	"	"	"	"	W Oak	14	N 57 W	52
	"	"	"	"	S Oak	9	S 65 W	42
	"	"	"	"	Beech	3	N 24 W	31
	"	"	"	"	Dogwood	5	N 48 E	31
	"	"	"	"	B Gum	10	S 81 W	16
	"	"	"	"	Oak	4	S 70 E	19
	"	"	"	"	T.W. Oak	12	N 20 E	25
	"	"	"	"	W OAK	7	N 30 W	11
	<p>E.O.B. June 11 1880</p> <p>Walker & Smith 1871-1885 Morgan Co Ind</p> <p>(14)</p>	"	"	"	"	W Oak	18	S 24 W
"		"	"	"	Beech	13	S 42 E	9
"		"	"	"	Original Stone			
"		"	"	"	P.	"	"	"
"		"	"	"	Black Oak	14"	S 35 1/2 W	25 ft.
"		"	"	"	"	11"	N 86 1/2 W	65 ft.
"		"	"	"	"	10"	S 47 E	16 1/2 ft.
"		"	"	"	"	13"	S 77 1/2 W	18 ft.
"		"	"	"	Beech	6"	East	3 1/2 ft.
"		"	"	"	Oak	7"	West	3 1/2 ft.
<p>C-1/2 distance between E and F</p> <p>J-1/2 distance between J and K</p> <p>By Gilbert - Apr 15-48</p>	"	Stone			Black Oak	15"	N 3 E	2 1/2 ft.
	"	"	"	"	Beech	20"	S 85 W	7 1/2 ft.
	"	"	"	"	Beech	10"	S 20 E	3 1/2 ft.
	"	"	"	"	Beech	15"	N 75 E	3 1/2 ft.
	"	"	"	"	Original Stone			
	"	"	"	"	J	"	"	"
	"	"	"	"	Black Oak	11"	S 50 W	17 1/2 ft.
	"	"	"	"	"	15"	N 20 W	35 ft.
	"	"	"	"	"	20"	West	16 ft.
	"	"	"	"	"	15"	N 28 E	18 1/2 ft.
<p>SEE BACK SEC 36</p> <p>By Blunk & Smith</p> <p>N 329 ft West of R.</p> <p>Auto Axel on line between Q and R</p>	"	old stone			W-OAK	8"	N 18 W	5 1/2 ft.
	"	"	"	"	B-OAK	10"	S 45 E	7 1/2 ft.
	"	"	"	"	STAKE	"	"	"
	"	"	"	"	SUGAR	10"	N 20 E	3 1/2 ft.
	"	"	"	"	TWIN WALNUT	12"	N 86 W	16 ft.
	"	"	"	"	SUGARS	4"	N	10 ft.
	"	"	"	"	W. oak	7"	S 37 W	9 1/2 ft.
	"	"	"	"	W oak	7"	S 74 E	10 3/4 ft.
	"	"	"	"	S.W. cor of lot 2 Section A Patton park			40' 3"
	"	"	"	"	SE cor of lot 2 Section A Patton park			69' 8"

RECORD OF SURVEYS IN MORGAN COUNTY, INDIANA

Section 12 Township 12 N North Range 1 West

REMARKS, &c., &c.	Course	Stone Mark	Bearing	Dist.	Bearing	Dist.	Course	Dist.
<p style="text-align: center;">By <u>M. Riggs</u></p> <p style="text-align: center;">He J. Craig B. J. Butler</p> <p>Sur. fr. J. H. Shiple, et al. Dec. 29 1885 & July 5 1886 thru Pike Co. Willey, Lewis, Ogden, Rippon Stout, Chairman. J. H. Shiple, Flagman Geo. W. Pearce, Surveyor H. A. Blank, 9/25, 09</p> <p style="text-align: center;">at 275.09 1/2 N of 1/4</p>	at O				Aspen	20	N 88° W	18
	N				Buck	14	S 17° E	29
	Y				Buck	3	East	—
	H				W. Oak	17	S 44° E	46
	G				Red Oak	—	S 20° W	29
	F				" "	8	S 66° E	1 1/2
	E				Hickory	4	N 54° W	15
	D				Oak	2	S 52° E	20
	C				Oak	7	N 56° E	24
	B				" "	—	West	10
	A				W. Oak	6	N 62° W	6
		R			" "	—	—	—
		Q			Hickory	3	S 7° E	23
		P			" "	3	S 73° W	5
		O			Summit	6	S 46° E	22
		N			Buck	14	N 64° E	57
		M			Hickory	18	S 73° E	1
		L			Oak	24	N 73° E	24
		K			Buck	22	N 13° E	30
		J			Aspen	3	S 69° E	35 1/2
	I			Aspen	24	N 67° E	2 1/2	
	H			Hickory	1	S 73° E	16 1/2	
	G			Buck	12	N 71° E	27	
	F			Aspen	4	S 72° W	39	
	E			Aspen	10	S 73° W	126	
	D			W. Buck	5	N 45° W	2	
	C			" "	4	S 63° W	32	
	B			Oak	5	N 67° E	6	
	A			Aspen	8	N 70° W	34	
	Z			Oak	14	N 74° E	31	
	Y			Summit	10	N 64° W	53	
	X			Hickory	10	S 56 1/2° W	15	
	W			" "	10	S 61 1/2° E	28	
	V			" "	13	S 79° E	14	
	U			" "	14	S 79° E	25	

RECORD OF SURVEYS IN MORGAN COUNTY, INDIANA.

Section 12 Township 12 North, Range 1 West.

REMARKS, &c., &c.	Corners.	Stone Mark.	Acres.	Hun.	Bearing Trees.	Diam.	Courses.	Dist.
<p style="text-align: center;">By <i>M. Higgins</i></p> <p style="text-align: right; margin-right: 20px;"><i>J.H.K.</i></p>	W	O	.		Sugar	20	N 88 W	18
	"	N	stone cor		Beech	14	S 17 E	29
	"	Y	" "		B Walnut	3	East	—
	"	H	" "		W Oak	12	S 46 E	46
	"	A	" "		R Oak	—	S 25 W	29
	"	R	" "		" "	8	S 68 E	1 1/2
	"	a	" "		Hickory	4	N 54 W	15
	"	R	stone cor		Oak	2	S 8 1/2 E	20
	"	Y	" "		Ironwood	7	N 15 E	24
	"	L	" "		stone		West	10
	"	B	" "		W Oak	6	N 68 W	6
	"	T	" "		Hickory	3	S 27 E	23
	"	L	" "		"	3	S 27 1/2 W	5
	"	B	" "		Jasoparas	6	S 46 E	22
	<p style="text-align: center;"><i>H. J. Craig</i> <i>B. J. Butler</i></p>	"	T	" "	Beech	14	N 54 E	57
"		L	" "	Hickory	18	S 75 E	1	
"		T	" "	Elm	24	N 73 E	24	
"		S	" "	Beech	22	N 1 1/2 E	30	
"		U	" "	Dogwood	3	S 47 E	35 1/2	
"		W	" "	Sugar	3 1/2	N 47 E	2 1/2	
"		U	" "	Hickory	1	S 16 1/2 E	16 1/4	
"		W	" "	Beech	12	N 14 E	28	
"		U	" "	Dogwood	4	S 72 W	39	
"		A	stone cor		Sugar	10	S 33 1/2 W	126
"		C	Notch in Oak log.		W Beech	5	N 45 W	2
"		B	" "		" "	4	S 63 W	32
"		H	old stone		Ash	5	N 17 1/2 E	6
"		e.	" "		Sugar	8	N 70 W	34
"		e.	" "		Elm	14	N 74 E	31
"	e.	" "		Jasoparas	10	N 64 W	63	
"	e.	" "		Hickory	10	S 56 1/4 W	15	
"	e.	" "		"	10	S 60 1/2 E	28	
"	e.	" "		"	13	S 78 E	14	
"	e.	" "		"	10	S 29 E	25	

Sur. fr. J. H. Shipley et al. Dec. 29 1885 + July 5 1886 Stone Pike
H. Willey, Lewis Ogden, Byron Stout, Chairman.
J. H. Shipley Flagman
Geo. W. Pearce, Surveyor
H. A. Blunk 325, 09
at 270.09 1/2 N of N.

283.082

RECORD OF SURVEYS IN MORGAN COUNTY, INDIANA.

Section 12 Township 12 North, Range 10

REMARKS, &c., &c.	Corners.	Stone Mark.	Acres.	Hun.	Bearing Trees.	Diam.	Courses.
<p>d 10.12 1/2 ch N of In By H. A. Blumberg, D 479. 9/28-1915</p>	d	Stone			Hickory	5"	S 43° W 1
	0	"			sugar	3"	N 96 1/2° W 1
	9.	"			ash		S 47 1/2° W 3
	B perpetuated				Hickory		North
					stone		South
					Beech	4"	S 81 1/2° W 1
					Sugar	3"	S 60° E 3
	P	Iron			white oak	12"	N. 35 1/2° W. 2
		astic			"	10"	S 35 1/2° W. 4
<p>By Carl Mease Dep. Sep. 29 - 1917</p> <p>Jan 15 - 1921, by Frank Smithson for Mosa & Co.</p>	D.	Stone			Hickory	10"	South 51° W
	C	Stone			White Oak	12"	North 68° W
	H	"			Small. least corner S. 2nd line	30 1/2"	30 1/2" East
	H Smith	"			White Oak		South 40° E
	F	old stone Found.			Stone mark		North 88 1/2° W South 88 1/2° E
<p>By Wilbur F Smith 3-19-53 E. R. Canarney & A. Reeves posts For Virgil Fecher</p> <p>F to G. 19.90 chs H to G. 20.10 chs G East to E of Wilbur Martinsville Road 4.56 chs.</p>	F	old stone Found.			Sugar	14"	S. E. 12
	H	old stone Found.			Iron wood	4"	S. W. E
	G.	Steel bumper Tack Stern			Hickory	5"	N. 30° E. 12
					Hickory	14"	S 56 1/2° W 1
					"	14"	S. 60 1/2° E 26
					Ash	7"	N. 15° E 14
					Ash	5"	N. W. 20
<p>Canatsey Aug. 2 - 1955</p> <p>SEE ALSO BOOK #40 P 57</p>	N.	old Stone			Maple	16"	N. 15° E 1
					S.W. corner House	-	N. 5° E 2
	'68	A	STONE		Beech	14"	S 60° W 2
					UNDER S.E. SIDE	24"	BEECH
					3 1/2" HICKORY	4"	S 80° E 2
					3 1/2" HICKORY	6"	N 25° E 1
	'68	X	STONE		SYCAMORE	4"	S 80° E 2
					POPLAR	18"	S 45° E 42
					ASH	4"	S 45° W 3
	'68	B	CORNER POST		BEECH	12"	S 31° 30' W 7
					MAPLE	9"	S 60° E 14
					BEECH	13"	N 3
SEE BACK OF 584-363							

RECORD OF SURVEYS IN MORGAN COUNTY, INDIANA.

Section 12 Township 12 North, Range 1W

REMARKS, &c., &c.	Corners.	Stone Mark.	Acres.	Hun.	Bearing Trees.	Diam.	Courses.	Dist.
	D	STONE			MAPLE	12"	W	78'5"
	I	STONE BURIED 15"			POPLAR	22"	N80E	13'10"
	W	IRON PIPE			TW. HICKORY	4"	S20W	2325'
	P	SEE SEC 11-L			WCHERRY	9"	S60E	20.9'
	H	STONE 1" IP OVER			WCHERRY	8"	S30E	40.0'
	N	STONE (1" PIPE OVER)			WATER METER		SOUTH	18'6"
	P	IRON PIPE			NE COR PORCH SLAB		S30W	70'1"
	S	STONE (1" PIPE OVER)			CATALPA	24"	S45E	82'3"
					Shell Hickory 12"		S. E.	18.7'
					Shell Hickory 14"		S W	11.9'
				BEECH 10"		WEST	59.4'	
				S.W. COR. PR. HOUSE		N30W	37'1"	
				UTILITY POLE		N45W	75'2"	
				MAPLE	12"	N60E	16'0"	
				W OAK	24"	S	28.8'	
				W OAK	16"	SE	51.9'	
				TRANS POLE		NW	47.0'	
				MAPLE	14"	E	1'10"	
				R OAK	18"	S	78'0"	
				SPIR HICK	26"	N	7'11"	

RECORD OF SURVEYS IN MORGAN COUNTY, INDIANA.

Section 13 Township 12 North, Range 1 West

REMARKS, &c., &c.	Corners.	Stone Mark.	Acres.	Hun.	Bearing Trees.	Diam.	Courses.	Di-
<p style="text-align: center;">By <i>H. G. Craig</i></p>	At <i>C</i>	<i>Stone cor</i>			<i>Hickory</i>	4	<i>N50W</i>	10
	" <i>E</i>	" "			<i>W Oak</i>	6	<i>N68W</i>	6
	" <i>O</i>	" "			<i>S Oak</i>	20	<i>S68W</i>	30
	" <i>G</i>	" "			<i>do</i>	14	<i>N56E</i>	4
	" <i>L</i>	" "			<i>B Walnut</i>	5	<i>S15W</i>	14
	" <i>M</i>	<i>Stone</i>			<i>Poplar</i>	8	<i>S38W</i>	12
	" <i>A</i>	" "			<i>Elm</i>	6	<i>N60W</i>	12
	" <i>B</i>	" "			<i>Beech</i>	10	<i>S24E</i>	22
	" <i>a</i>	" "			"	18	<i>S61 1/2 W</i>	39
	" <i>b</i>	" "			<i>S Oak</i>	2	<i>S8 1/2 W</i>	80
	" <i>c</i>	" "			<i>W Oak</i>	2	<i>S13W</i>	79
	" <i>d</i>	" "			<i>Sugar</i>	-	<i>S3 1/2 W</i>	12
	" <i>e</i>	" "			<i>R Oak</i>	10	<i>S28 1/2 E</i>	11 1/2
	" <i>f</i>	" "			<i>Hickory</i>	6	<i>S65E</i>	43 1/2
	" <i>g</i>	" "			"	3	<i>S50 1/2 W</i>	31 1/2
" <i>h</i>	" "			<i>Sogwood</i>	2	<i>S72W</i>	29	
" <i>i</i>	" "			<i>Beech</i>	15	<i>N79 1/2 W</i>	9	
" <i>j</i>	" "			<i>Hickory</i>	3	<i>N27 1/2 W</i>	46 1/2	
" <i>k</i>	" "			<i>W Oak</i>	30	<i>S48 1/2 W</i>	2	
" <i>l</i>	" "			<i>B Walnut</i>	8	<i>N26 1/2 E</i>	26	
" <i>m</i>	" "			<i>Hickory</i>	16	<i>N31E</i>	30	
" <i>n</i>	" "			"	9	<i>S66 1/2 E</i>	31	
" <i>o</i>	" "			<i>R. Oak</i>	15	<i>N83 1/2 W</i>	47 1/2	
" <i>p</i>	" "			<i>Sugar</i>	10	<i>S85W</i>	16	
" <i>q</i>	" "			<i>R. Oak</i>	10	<i>N12E</i>	47 1/2	
" <i>r</i>	" "			<i>Stone</i>		<i>South</i>	30	
" <i>s</i>	" "			"		<i>N20E</i>	25	
" <i>t</i>	" "			<i>Ash</i>	10	<i>N27E</i>	4 1/2	
" <i>u</i>	" "			<i>R Oak</i>	4	<i>S4 1/2 W</i>	11	
" <i>v</i>	" "			<i>Beech</i>	12	<i>N66E</i>	31 1/2	
" <i>w</i>	" "			<i>B Oak</i>	3	<i>N4E</i>	13 1/2	
" <i>x</i>	" "			<i>Stone Cut</i>	113	<i>Course M of</i>	46 1/2	
" <i>y</i>	" "			<i>R Oak</i>	24	<i>S63W</i>	10	
" <i>z</i>	" "			<i>W Oak</i>	20	<i>S28E</i>	27	

E. A. Bourne

J. Keitt June 16th 1883

G. W. Pearce

RECORD OF SURVEYS IN MORGAN COUNTY, INDIANA.

Section **12** Township **12** North, Range **10**

REMARKS, &c., &c.	Corners.	Stone Mark.	Acres.	Hun.	Bearing Trees.	Diam.	Courses.
<p>d 10.12 1/2 ch N of Jm By H.A. Blumberg, Dept. 9/28-1915</p>	d	stone			Hickory	5"	S 43° W 1
	0	"			sugar	3"	N 96 1/2° W 1
	g.	"			ash		S 47 1/2° W 3
	B perpetuated				Hickory		North 3
					stone		South 2
					Beech	4"	S 31 1/2° W 1
					Sugar	3"	S 60° E 3
	P	Iron			white oak	12"	N. 35 1/2° W. 3
		stone			"	10"	S 33 1/2° W. 4
<p>By Carl Mease Dep. Sep. 29 - 1917 Jan 15 - 1921, by Frank Smithson for Moss & Co.</p>	D.	Stone			Hickory	10"	South 51° W
					W. Oak	12"	North 68° W
	C	Stone			South-west Corner School House	33 1/2"	S 81° E 1
	H	"			Cash Tree with N. 1/4 27 1/2		South 40° E
	H Smith-C	"			Stone mark.		North 88 1/2° E South 88 1/2° W
<p>By Wilbur F Smith 3-19-53 E. P. Canarsey & A. Reeves posts for Virgil Fecher F to G. 19.90 chs H to G. 20.10 chs G East to E of Wilbur Martinsville Road 4.56 chs.</p>	F	old stone Found.			Sugar	14"	S. E. 12
					Iron wood	4"	S. W. E
	H	old stone Found.			Hickory	5"	N. 30° E. 10
					Hickory	14"	S 56 1/2° W 11
					"	14"	S. 60 1/2° E 20
	G.	Steel Bumper Tack Stern			ASH	7"	N. 15° E 14
					ASH	5"	N. W. 20
<p>Canarsey Aug. 2 - 1953 SEE ALSO BOOK #40 P 57</p>	N.	old Stone (1915)			Maple	16"	N. 15° E 1
					S.W. corner House		N. 5° E 2
	'68	A	STONE		BEACH	14"	S 60° W 2
					UNDER S.E. SIDE 24" BEECH		
					3 1/2" HICKORY	4"	S 80° E 7
					3 1/2" HICKORY	6"	N 25° E 1
	'68	X	STONE		SYCAMORE	4"	S 80° E 21
					POPLAR	18"	S 45° E 42
					ASH	4"	S 45° W 31
	'68	B	CORNER POST		BEECH	12"	S 31° 30' W 7
					MAPLE	9"	S 60° E 14
					BEECH	13"	N 3° 3
SEE BACK OF 584-363							