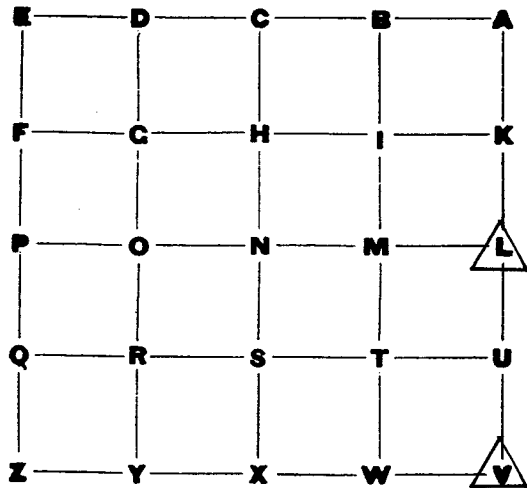


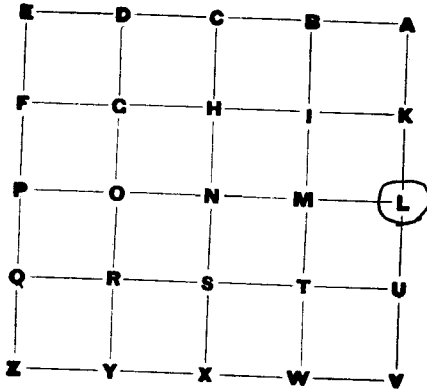
RECORD OF SURVEYS IN MORGAN COUNTY, INDIANA.

Corner INDEX Section 36 Township 17 North, Range 2E



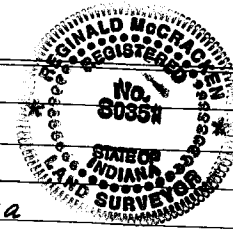
RECORD OF SURVEYS IN MORGAN COUNTY, INDIANA.

Corner "L" Section 36 Township 11 North, Range 2 East



October 6, 1988

Field Crew - Daniel Powell, Pat Lashbrook, & Robert E. Burdine



(Pt # 129) [Found] Cut Limestone Stone which measures 8" long x 5" wide x 16" in depth. Stone is a Tabloid shaped stone & stands on end, also; it is damaged as there is a split in the stone which runs the length of the stone. It is approximately 6" above the ground surface & there are (2) fence lines North-South which end at stone & are approximately 6.5' apart. There is also a west bound fence intersecting at this point. Painted Stone & References Orange.

(Pt # 127) Set Type "A" Concrete Reference Monument, S 61° 20' 29" W - 15.53' (Astronomical)

(Pt # 128) Set Type "A" Concrete Reference Monument, N 18° 24' 29" W - 14.15' (Astronomical)

(Pt # 66) Set "V" S 25 T 11 R 2 E, N 00° 10' 15" E - 2678.63' (Astronomical)

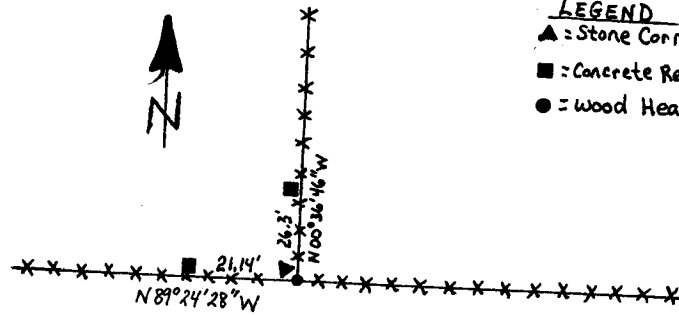
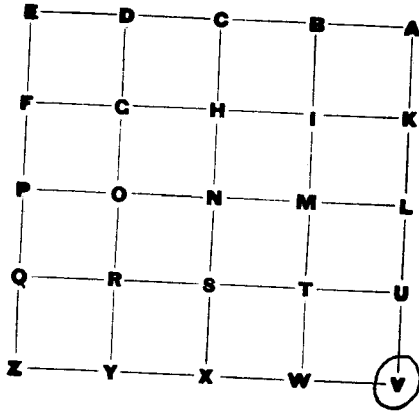
(Pt # 121) [Found] "V" S 36 T 11 R 2 E, S 00° 10' 45" W - 2678.58' (Astronomical)

Note: All Distances & Bearings are from Pt # 129 to References.

Reginald McCracken Morgan County Surveyor 10-10-88

RECORD OF SURVEYS IN MORGAN COUNTY, INDIANA.

Corner "V" Section 36 Township 11 North, Range 2 East



- LEGEND
- ▲ = Stone Corner
 - = Concrete Reference Monument
 - = Wood Head Post

Note: All Bearings & Distances from Stone to References (Astronomical)

October 6, 1988

Field Crew - Rick Tapp, Reginald McCracken, & Robert E. Burdine

(Pt #121) [Found] Stone Stone is tabloid shaped sandstone measuring 0.25' wide x 0.95' long x 1.4' deep. The stone is standing on its end & is leaning southward slightly.

Reginald Morgan County Surveyor 10-10-88

