

	3585	3660	3660	35676	35436	35676	3547
1	40	40	40	40	40	40	40
2	40	40	40	40	40	40	40
3	40	40	40	40	40	40	40
4	40	40	40	40	40	40	40
5	40	40	40	40	40	40	40
6	40	40	40	40	40	40	40
7	40	40	40	40	40	40	40
8	40	40	40	40	40	40	40
9	40	40	40	40	40	40	40
10	40	40	40	40	40	40	40
11	40	40	40	40	40	40	40
12	40	40	40	40	40	40	40
13	40	40	40	40	40	40	40
14	40	40	40	40	40	40	40
15	40	40	40	40	40	40	40
16	40	40	40	40	40	40	40
17	40	40	40	40	40	40	40
18	40	40	40	40	40	40	40
19	40	40	40	40	40	40	40
20	40	40	40	40	40	40	40
21	40	40	40	40	40	40	40
22	40	40	40	40	40	40	40
23	40	40	40	40	40	40	40
24	40	40	40	40	40	40	40
25	40	40	40	40	40	40	40
26	40	40	40	40	40	40	40
27	40	40	40	40	40	40	40
28	40	40	40	40	40	40	40
29	40	40	40	40	40	40	40
30	40	40	40	40	40	40	40
31	40	40	40	40	40	40	40
32	40	40	40	40	40	40	40
33	40	40	40	40	40	40	40
34	40	40	40	40	40	40	40
35	40	40	40	40	40	40	40
36	40	40	40	40	40	40	40

Township 13 North Range 2 West.

FIELD NOTES OF MORGAN COUNTY, INDIANA.

Township

13

North, Range 2 West.

Corners.	Bearing Trees.	Diam.	Courses.	Dist.	Corners.	Bearing Trees.	Diam.	Courses.	Dist.	Corners.
A	Beech	18	N 55 W	16	A	Beech	9	S 30 E	4	A
	"	12	N 57 E	16		"	10	N 50 W	37	
a						L				
B	B. Ash	20	N 40 W	26		M	Maple	14	N 65 E	5
	S. Ash	6	S 53 1/2 E	22		W. Ash	18	N 84 W	12	
b						m	Beech	18	N 11 E	48
c	Hickory	9	S 69 E	16		"	10	S 45 W	12	
	B. Ash	13	S 24 W	39		N	"	10	N 22 E	19
d						n	Maple	15	S 61 W	18
e	Sugar	—	N 67 W	11		n	Sugar	12	S 87 W	17
	Beech	14	S 76 W	48		o	Hickory	18	S 30 E	1
f						o	Sassafras	12	S 74 W	4
g	"	13	S 68 W	11		"	12	N 38 E	30	
	"	12	N 88 1/2 E	13		o	Beech	27	S 24 W	21
h	Hickory	13	S 47 W	7		p	"	10	N 35 E	14
	Lynn	8	N 16 E	29		p	Elm	9	N 64 W	9
i						q	Sugar	9	N 35 E	—
g	Beech	30	S 27 E	13		q	Beech	12	N 49 W	24
	"	24	N 29 W	45		Q	"	12	S 68 E	3
g	"	20	S 15 E	25		Q	"	14	West	7
h	Hickory	5	S 87 W	6		r	"	9	S 14 E	7
	Beech	18	S 25 E	13		r	"	27	S 88 W	18
	Dogwood	—	N 20 W	6		R	"	18	N 74 E	34
h	Beech	18	S 20 W	39		R	"	18	S 63 W	14
	Elm	18	N 24 E	54		r	Poplar	12	S 83 E	19
i	Beech	30	N 88 E	7		r	Beech	12	N 36 W	21
	"	18	S 57 W	29		s	"	9	S 26 E	28
	"	40	N 15 E	10		s	"	20	N 68 W	31
i	B. Oak	12	N 78 W	30		s	"	30	S 28 E	17
	Beech	15	S 29 E	34		s	W Oak	30	S 65 E	3
	"	12	N 21 W	15		s	do	30	N 47 W	13
k	Elm	9	N 52 W	6		t	Sugar	14	N 16 W	11
	"	12	S 31 E	41		t	Beech	18	S 83 E	21

FIELD NOTES OF MORGAN COUNTY, INDIANA.

Township

13

North, Range 2 West

	Corners.	Bearing Trees.	Diam.	Courses.	Dist.	Corners.	Bearing Trees.	Diam.	Courses.	Dist.	Cor.
1	25.26.35.36.	Hickory	14	N73W	7 1/2	at 16.17.20.21.	Beech	19	N69E	19	
		Beech	10	N58E	31		"	20	N75W	35	
"	23.24.25.26.	Maple	9	N37E	12	" 8.9.16.17.	W. Oak	23	N61 1/2 W	25	
		"	10	N88W	9		Beech	12	N62 1/2 E	16	
"	13.14.23.24.	Beech	22	N34W	11	" 4.5.8.9.	"	17	N70 1/2 E	18	
		"	10	N41E	30		"	17	N33W	32	
"	11.12.13.14.	"	18	N83E	21	" 29.30.31.32.	"	8	South	7	
		"	8	N36W	6		"	30	N85W	15	
"	1.2.11.12.	"	11	N77W	14	" 19.20.29.30.	Beech	18	N17W	20	
		Lynn	-	N88E	44		W Oak	6	N74W	23	
"	26.27.34.35.	Sugar	7	N85W	20	" 17.18.19.20.	Beech	11	N19W	88	
		"	12	N44E	18		"	20	N89W	24	
"	22.23.26.27.	Hickory	24	N44W	16	" 7.8.17.18.	Sugar	10	N41W	10	
		Walnut	12	N81E	30		Beech	6	N6E	17	
"	14.15.22.23.	Maple	9	N62E	10	" 5.6.7.8.	W. Oak	18	N22E	18	
		"	5	N3W	7		Hickory	2	N65W	10	
"	10.11.14.15.	Beech	13	N31E	35						
		"	14	N11E	55						
"	2.3.10.11.	"	8	N26E	9						
		Hickory	9	N56W	10						
"	27.28.33.34.	Beech	12	N88E	35						
		"	10	N52W	30						
"	21.22.27.28.	"	16	N10W	10						
		"	20	N53 1/2 E	13 1/2						
"	15.16.21.22.	W Oak	2	N64E	3						
		W Beech	4	N42W	14 1/2						
"	9.10.15.16.	Beech	12	N57E	20						
		B. Gum	20	N38 1/2 W	19						
"	3.4.9.10.	W. Oak	30	N79W	26						
		do	20	N15E	29 1/2						
"	28.29.32.33.	Hickory	10	N16W	15						
		Beech	12	N53W	20						
"	20.21.28.29.	F. Oak	30	N76E	19						
		B. Oak	15	N3 1/2 E	27						

FIELD NOTES OF MORGAN COUNTY, INDIANA.

Township

13

North; Range

2 West

Corners.	Bearing Trees.	Diam.	Courses.	Dist.	Corners.	Bearing Trees.	Diam.	Courses.	Dist.
at Mt to U					from Mt to W				
at 1	Elm	27	S 45 W	22	at 5	Sugar	18	N 37 E	16
	S. Ash	7	N 43 1/2 E	19		Beech	14	S 4 W	30
" 2	Hickory	11	N 3 E	19	" 6	"	12	Corner	"
	Beech	20	S 8 1/2 W	8		Elm	6	S 82 E	26
" 3	"	10	N 40 W	9		Sugar	20	N 32 W	32
	"	7	S 4 E	27	" I to H				
" 4	"	15	S 50 W	28	at 1	Beech	15	N 34 E	15
	"	18	S 60 E	32		G. Ash	22	N 26 W	26
" 5	"	12	N 3 1/2 E	27	" 2	Lynn	30	S 30 E	13
	Hickory	14	S 66 W	28		Beech	24	N 49 W	32
" 6	Ash	3	S 22 W	6	" 3	"	12	S 76 W	20
	Elm	20	N 63 1/2 W	23		"	6	S 75 W	26
from L to D					" 4	"	20	S 17 E	16
at 1	Beech	12	N 61 W	22		"	20	N 26 1/2 W	19
	Lynn	8	S 17 W	11	" 5	Sugar	8	S 82 E	10
" 2	Beech	12	N 26 W	40		Beech	18	S 83 W	27
	"	13	S 20 W	22	" 6	"	13	N 61 1/2 W	10
" 3	"	12	N 43 W	36		"	12	N 66 1/2 E	4
	"	14	S 77 W	24	" H to G				
" 4	"	20	N 7 E	4	at 1	"	14	S 53 E	14
	"	8	S 22 W	37		"	15	S 47 E	26
" 5	Buckeye	12	N 66 E	11	" 2	B. Oak	15	S 53 E	20
	Elm	24	S 20 W	77		Elm	8	N 34 E	18
" 6	Beech	7	S 63 W	25	" 3	Sugar	12	S 65 W	1
	"	24	N 35 E	35		Beech	30	S 4 W	8
K to W					" 4	W. Oak	30	S 24 W	8
at 1	Elm	19	S 33 1/2 E	25		Beech	12	N 12 W	25
	Beech	11	N 29 1/2 W	31	" 5	S. Ash	6	N 76 E	6
" 2	Maple	30	S 80 W	20		"	4	N 87 W	6
	"	15	N 78 E	22	" 6	Beech	12	S 71 E	20
" 3	Lynn	4	N 52 E	42		Hickory	42	S 35 W	32
	Elm	5	N 82 W	18	" O to F				
" 4	Beech	24	S 61 W	17	at 1	Beech	24	S 24 1/2 E	21
	"	18	N 21 E	30		"	24	S 13 1/2 W	33

FIELD NOTES OF MORGAN COUNTY, INDIANA.

Township

13

North, Range 2 West

Dist.	Corners.	Bearing Trees.	Diam.	Courses.	Dist.	Corners.	Bearing Trees.	Diam.	Courses.	Dist.
	Q to A					A to Q				
6	at 2	R Oak	12	S77 $\frac{1}{2}$ E	12	at 6	Sugar	14	N83W	13
0	"	"	14	N72W	12		Beech	20	N64E	19 $\frac{1}{2}$
6	" 3	Maple	15	S58E	32	" R to 6				
2	" 4	Beech	7	S4E	27	at 1	Hickory	22	North	17
	" 5	"	18	S50W	23	"	Beech	21	S17E	18
6	" 6	"	12	S60E	32	" 2	"	18	N55E	15
3	" 7	Hickory	14	N31E	27	" 3	"	6	N77W	22
2	" 8	"	12	S66W	25	" 4	Lynn	23	N45W	10
5	" 9	"	22	S3W	26	" 5	Beech	9	N65E	6
6	P to E					" 6	Elm	12		48
6	at 1	Poplar	48	N20W	22	" 7	"	8	S6 $\frac{1}{2}$ W	32
9	" 2	Beech	11	S26 $\frac{1}{2}$ E	27	" 8	Beech	11	S57E	4
7	" 3	"	15	N37E	32	" 9	"	13	N11E	22
0	" 4	"	19	S37 $\frac{1}{2}$ W	36	" 10	Ash	7	N15E	33
4	" 5	Maple	24	S48E	16	" 11	Hickory	13	S8W	22
6	" 6	S. Ash	22	N34W	26	Sto B				
3	" 7	Beech	11	N8 $\frac{1}{2}$ E	21	at 1	R. Ash		S59W	22 $\frac{1}{2}$
4	" 8	"	12	S32E	11	"	Beech	12	S44E	17
6	" 9	Hodocnut	23	N9E	18	" 2	Maple	9	S26W	10
0	" 10	Plum		S9 $\frac{1}{2}$ E	19	" 3	Willow	12	N88W	10
8	" 11	Beech	11	S77E	7	" 4	Beech	12	N34E	6 $\frac{1}{2}$
	" 12	J. Ash	19	N67W	32	" 5	"	14	Corner	
5	Q to D					" 6	"	16	S21E	6
	at 1	Beech	14	S53E	23	" 7	"	14	S62 $\frac{1}{2}$ E	8
	" 2	Hickory	15	N16W	33	" 8	B. Gum	12	N87W	13
	" 3	Beech	12	N67W	3 $\frac{1}{2}$	" 9	Sugar	6	N64E	13 $\frac{1}{2}$
	" 4	"	18	N40E	24	" 10	"	8	S64W	20
	" 5	Ash	7	S40E	45	" 11	Beech	22	S49E	10
	" 6	"	6	S53 $\frac{1}{2}$ E	45	" 12	"	13	S9W	22
	" 7	Beech	20	N53W	11					
	" 8	"	13	N85E	35					
	" 9	"	12	S65E	13					
	" 10	"	14	N53E	18					

RECORD OF SURVEYS IN MORGAN COUNTY, INDIANA.

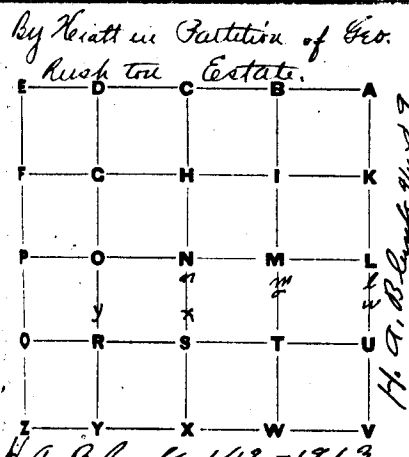
Section 1 Township 13 North, Range 2 West

REMARKS, &c., &c.	Corners.	Stone Mark.	Acres.	Hun.	Bearing Trees.	Diam.	Courses.	Dist.	
<p style="text-align: center;">By J. Leadley</p>	at Y				P Oak	22	S 4 E	45	
	R				R Elm	3	S 55 W	41	
	"				B Oak	36	S 34 W	82	
	"				Elm	12	S 80 W	10	
	"				Beech	—	S 43 W	6	
	"				W Oak	30	N 54	27	
	"				Beech	22	Corner		
	"				"	—	S 26 W	21	
	"				"	11	S 42 E	57	
	"				Hickory	24	North	57	
	"				Beech	10	S 32 E	10	
	"				W Oak	1	S 65 E	3	
	"				R Oak	2	N 46 E	12	
	"				Maple	6	N 58 W	4	
	<p style="text-align: center;">Leiram J. Craig</p>	"			"	5	N 21 W	5	
"					W Oak	36	N 43 W	76	
"					Beech	12	N 85 E	50	
"					Elm	20	S 53 W	20	
"					S Ash	5	N 37 W	12	
"					Elm	20	S 17 W	37	
"					Maple	17	S 25 E	49	
"					Cherry	4	S 84 E	13	
<p style="text-align: center;">Benj F. Butler</p>		"	stone cor.			W Oak	24	N 31 W	57
		"	stone			S Ash	15	N 27 E	60
	"				R Oak	10	N 59 W	13	
	"				B Walnut	5	S 13 W	14	
	"				R Oak	15	N 43 E	42	
	"				Hickory	15	S 83 E	40	
	"				S Oak	12	N 17 E	19	
	"				Hickory	10	East	24	
	<p>Partition of Geo. Rushton Estate Sept 14 1883. Calvin Curtis, Wm. H. Johnson & Spencer Hiatt Comms. Line 1 to 3 Variation of 2° E and North 1/2, South Lines 3° 10'</p>	"				Apple tree	6	S 11 W	14
		"				Stone		N 88 W	20
"					S Oak	20	S 26 E	67	
			104	43	R Oak	13	N 50 E	41	
					Stone		S 88 E	38	

RECORD OF SURVEYS IN MORGAN COUNTY, INDIANA.

Section 1 Township 13 North, Range 2 West

REMARKS, &c., &c.	Corners.	Stone Mark.	Acres.	Hun.	Bearing Trees.	Diam.	Courses.	Dist.
By Heiath in Partition of Geo. Bush's Estate.	At 4	Stone			Stone		North	25'
	" 5				Oak	9	N 66° E	28'
					Burr Oak	12	N 50° 20' W	49 1/2 3/4
	J	Iron bolt 1 1/2" long 2 1/2 ch N of J			stone		East	15 ft
	X	stone 2 1/2 ch N of X.			Elm	17	N 5 1/2° E	79 ft
	L	stone			stone		South	31 ch
	2 1/2 7.94 3 1/2 L				sugar	9	S 8° E	15 1/2'
	W	stone			Hickory	9	N 10 1/2° E	123'
	W 3.75 8 1/2 L				Hickory	15	S 65° W	57 ft
H.A. B. Clark 1/13-1913					oak	3	N 33 1/2° E	39 ft
Partition of John Whitlaw in 1871	"	"			Sycamore	20	N 23° E	32'
	M	"			Burr oak	16	N 71° E	56 1/2'
m is 3.71 south of M.	m	"			Elm	20	S 22 1/2° E	86'
n is 7.92 south of M	n	"			Walnut	14	S 7° E	82'
p is 11.88 south of M	p	"			oak	24	S 24° E	75'
By H.A. B. Clark 6/24-1915	R	Harrow tooth			stone	8	S 16 1/2° E	71'
" H.A. B. Clark Dec. 6/25-1905 perpetuated	Q	stone			stone		West	15 ft.
							South	16 1/2'
	e = 3.12 1/2 8 1/2 D. Stone				Stone		East	15 ft
					"		West	15 "
3.12 1/2 ch. 8 and 5.00 ch. East of D.	f	stone			"		West	1.00 ch
					"		North	.75 "
	O	Iron Rod			"		East	1.00 "
h is 5.00 ch. E. and 15.78 8 1/2 of O.	h	stone			"		North	50 ch
j is 5.00 N of h.	j	"			"		North	35 "
k is 4.54 East of j in hundred creek	i	no stone en.			"		West	104.
Wilbur F. Smith Co. Surveyor 2-16-07	d	1 1/2" Harrow tooth 16.95 ch. North of O			Concrete post North end of East Concrete Headwall		West S. 20° E	24 LKS 79 1/2 LKS.
	A	SEE SEC 6	5 EC	6	" E' T 13	1 W		



RECORD OF SURVEYS IN MORGAN COUNTY, INDIANA.

Section **2**

Township **13**

North, Range **2 West**

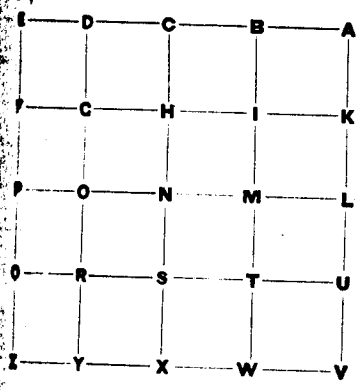
REMARKS, &c., &c.	Corners.	Stone Mark.	Acres.	Hun.	Bearing Trees.	Diam.	Courses.	Dist.	
<p style="text-align: center;">By <i>Keiram J Craig</i></p> <p style="text-align: right;"><i>B.A. Butler</i></p>	At <i>M</i>	Stone cor			<i>Enguard</i>				
	" <i>M</i>	" "							
	" <i>B</i>	" "							
	" <i>C</i>	" "							
	" <i>a</i>	" "							
	" <i>b</i>	" "							
	" <i>c</i>	" "							
	" <i>d</i>	" "							
	" <i>e</i>	" "				<i>B Walnut</i>	<i>4</i>	<i>N 28 W</i>	<i>67</i>
	" <i>f</i>	" "				<i>B Oak</i>	<i>15</i>	<i>S 55 E</i>	<i>20</i>
<p style="text-align: center;"><i>E. A. Bourne</i></p> <p><i>May 4th 1887 G. W. Prance</i> <i>Survey for A Johnson et al.</i> <i>Columbus M. Kelton</i> } <i>Assets.</i> <i>Logan Stout</i></p>	" <i>g</i>	" "			<i>B Oak</i>	<i>24</i>	<i>N 31 1/2 W</i>	<i>30</i>	
	" <i>h</i>	" "			<i>B Oak</i>	<i>24</i>	<i>N 67 3/4 W</i>	<i>59</i>	
	" <i>i</i>	" "			<i>S Ash</i>	<i>6</i>	<i>S 44 E</i>	<i>38 1/2</i>	
	" <i>j</i>	" "			<i>Lynn</i>	<i>15</i>	<i>N 78 E</i>	<i>49</i>	
	" <i>k</i>	" "			<i>Cherry</i>	<i>8</i>	<i>S 25 E</i>	<i>30</i>	
	" <i>l</i>	" "			<i>G. Ash</i>	<i>4</i>	<i>N 78 1/2 E</i>	<i>42</i>	
	" <i>m</i>	Stone			<i>Stone</i>		<i>S 46 1/2 W</i>	<i>46</i>	
	" <i>n</i>	"			"		<i>S 45 1/2 E</i>	<i>36</i>	
	" <i>o</i>	"	<i>13.40</i>	<i>Old No. 1 P.</i>	"		<i>N 49 1/2 W</i>	<i>37 1/2</i>	
	" <i>p</i>	Centre of <i>Mth</i> road			"		<i>North</i>	<i>91</i>	
" <i>q</i>	"	<i>Stone 16.38</i>	<i>Old Eng. No. 3. 4"</i>	<i>Side upright</i>		<i>S 62 W</i>	<i>26</i>		
" <i>r</i>	Centre of <i>Mth</i> road			<i>4" Side upright</i>		<i>N 63 1/2 W</i>	<i>50 1/2</i>		
<p><i>By O. H. G. Co. Oct 12th 1894</i> <i>Corner is 73 3/4 links East of the</i> <i>South 1/2 mile by Sec 35 T14N R3W</i></p> <p><i>By H. A. Block Nov 15-1921</i> <i>J. H. Litzman Partition</i> <i>By Wilbur F Smith</i> <i>March 7 1951 for</i> <i>Delbert Murphy and others:</i> <i>pt is 2043' west of N.</i></p>	At <i>Co</i>	Stone Cor			<i>Stone</i>		<i>N 37 1/2 W</i>	<i>30</i>	
	" <i>U</i>	"			<i>Stone</i>		<i>S 89 E</i>	<i>65 1/2</i>	
	" <i>V</i>	"	<i>Corner in 1925 of J</i> <i>Ditch. 1887 No. 1</i> <i>13.65 No. 1</i>			<i>8" Tile</i>		<i>South</i>	<i>61 1/2</i>
	" <i>W</i>	"	<i>Stone</i> <i>1920 No. 1</i> <i>9.00 No. 1</i>			<i>Stone</i>		<i>South</i>	<i>50 1/2</i>
	" <i>X</i>	"	<i>Stone</i> <i>9.00 No. 1</i>			<i>Stone</i>		<i>North</i>	<i>25 1/2</i>
" <i>N</i>	Stone				<i>6" North of Concrete post.</i>				
" <i>P1</i>	Stone in E of road				<i>POWER POLE N 65 E</i>		<i>15 1/2</i>		
					<i>IRON PIN S. 65 W.</i>		<i>5 1/2</i>		

RECORD OF SURVEYS IN MORGAN COUNTY, INDIANA.

Section Township North, Range

REMARKS, &c., &c.

*limited by Stanley Skontle
Reginald McEachern 12-6-86*



Corners.	Stone Mark.	Acres.	Hun.	Bearing Trees.	Diam.	Courses.	Dist.
B	4" x 5" x 2 1/2" limestone w/ "x"			Power Pole Cone Culvert Handrail " "		N 29° W N 65° W S 55° W S 30° W	10.22' 26.42' 37.85' 42.12' 3/4

7
0
0
8
4
0
2
6
6
7
1
1
1
0
5
1
1
1
0
3

3
4
5
6
7

RECORD OF SURVEYS IN MORGAN COUNTY, INDIANA.

Section 3 Township 13 North, Range 2 West

REMARKS, &c., &c.	Corners.	Stone Mark.	Acres.	Hun.	Bearing Trees.	Diam.	Courses.	Lts.
By Pickett	at O				Ash	6	N 40 E	21
	D	Stone cor.			Sugar	17	S 56 E	21
	G	"			W Oak	26	S 21 E	29
	R	"			do	36	S 25 W	66
	Q	"			Beech	15	N 33 W	41
	I	"			A Oak	5	S 57 E	35
	W	"			W Oak	40	S 66 E	11
	N	"			do	5	S 45 W	55
	L	"			Beech	12	S 65 W	41
	U	"			do	18	N 40 E	59
	M	"			Hickory	24	S 37 W	4
	K	"			Pine Oak	10	N 23 E	60
	J	"			Stone		West	30
	V	"			Beech	28	S 4 W	70
	P	"			"	24	S 28 E	56
	<p>May 4th 1887 G. W. Pearce Survey for J. V. Elmon & W. H. Brown (Colonial M^{rs} Cloud) Logan Stout } Assts.</p>	B	Stone center of M ^{rs} road			Stone		S 23 W
	C	" 30 rods N 85 W of E in sec 2 cut. M ^{rs} road			"		S 67 E	77
	L	Stone			"		S 22 W	21
	M	"			"		N 76 W	43
	a	" 7 1/2 to W 1090 chs N of K stone			Ash	14	North	17
	J	Stone			Stone		East	18
	F	Stone x			Stone		S 53 1/2 W	107
	J	Stone			do		S 34 1/2 E	36
	H	Stone			Bl Locust	12	S 68 1/2 E	28
	V	Stone			do	13	N 62 1/2 E	30
	R	Stone			Stone		S 34 1/2 E	31
	U	Stone			do		S 1 E	53
	T	Stone			do		S 35 1/2 E	64
	S	Stone			Stone		South	21
	Q	Stone			1 1/2" Pipe		North	32
<p>By Carl Haake Deputy April 1913</p>		N = 7.55 west of N "						
		X = 7.55 west of N 1/4" Pipe						

B, L, F, P, O, 2, S, G, 1

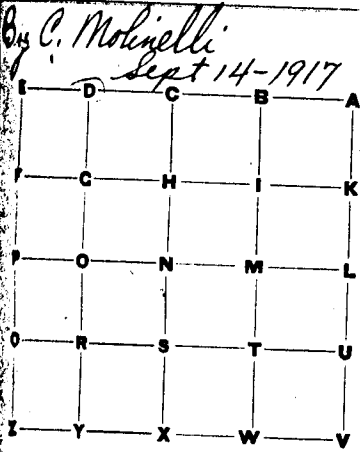
RECORD OF SURVEYS IN MORGAN COUNTY, INDIANA.

Section **3**

Township **13**

North, Range **2 W**

REMARKS, &c., &c.



Submitted by Stanley Shettle
Original M^cCracken 12-6-86

Corner.	Stone Mark.	Acres.	Hun.	Bearing Trees.	Diam.	Course.	Dist.
At G	(stone ev. perpetuated)			Hickory	8"	N. 26 1/4 W.	31.7 Ft.
" D	(" " ")			stone Elm	6"	N. 1/2 W.	27.75 Ft.
" X	I.P. C/L Road			Hendricks Co. lap stone conc. post Nugle iron POST IN CONC.		S. 1 1/4 W.	24.55 Ft.
" Z	STONE 1" x 1" OVER			NE cor. Barn Nugle iron POST IN CONC. CONC. CORNER utility pole utility pole		West	30.6 Ft.
C	Stone w/ "x" 7" deep RR spike above					North	16' 0"
E	Stone 12" x 12" x 28" Set (8" deep)			White Re P. Stone w/ "x" 9" x 12" x 19"		N 30 W	23' 4 1/2"
						S 82 W	69' 0"
						North	48' 2"
						S 60 E	37' 1"
						S 30 W	34' 7" Ft.
						S 70 W	58' 0" Ft.
						S 53 1/4 W	32.36'

RECORD OF SURVEYS IN MORGAN COUNTY, INDIANA.

Section ✓ Township 13 North, Range 2 West

REMARKS, &c., &c.	Corners.	Stone Mark.	Acres.	Hun.	Bearing Trees.	Diam.	Courses.	Dist.	
By Pichett	at M				Beech	30	N77E	40	
	"	"			"	12	N72W	66	
	"	"			"	24	Corner		
	"	"			"	30	N18W	36	
	"	"			"	20	N88E	41	
	"	"			"	16	S35W	27	
	"	"			"	16	N36E	22	
	"	"			"	8	N87W	6	
	"	"			"	6	S60E	27	
	"	"			"	Beech	18	S56E	18
	"	"			"	"	20	N8W	11
	"	"			"	to Locust	2	N61E	12
	"	"			"	Bash	15	S36W	18
	"	"			"	B Oak	7	S12E	38
	"	"			"	Beech	15	East	41
	"	"			"	"	18	S63E	60
	"	"			"	B Ash	12	S1W	57
"	"			"	W Oak	18	S50W	53	
"	"			"	Beech	11	S82E	50	
"	"			"	W Oak	6	S87W	13	
"	"			"	Wild Cherry	10	S80E	108	
"	"			"	Stone		S87W	25	
"	"			"	Elm	6	East	2	
"	"			"	Wild cherry		N73E	38	
"	"			"	stone		East	26	
"	"			"	"		East	28	
"	"			"	"		East	28	
"	"			"	Beech	24	S35E	10	
"	"			"	stone		N33W	24	
"	"			"	"		East	28	
"	"			"	"		East	28	
"	"			"	"		West	28	
"	"			"	"		"	18	
"	"			"	"		N88W	28	

M^{rs} Habb

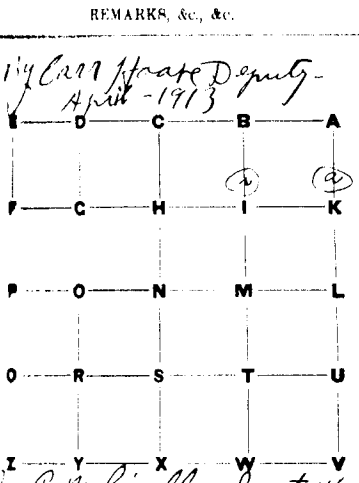
Pichett
By Carl O. Gilbert
for James Wallace
By H.A. Blunk Dec. 14, 09

H.A. Blunk, Oct. 5-1911
q is 1.95 ch. East of Q

x is 7.61 North of X.
z is 11.40 North and 3.99 East of Z
at intersection of old bed of Plum
Creek with Plum Creek Ditch.

RECORD OF SURVEYS IN MORGAN COUNTY, INDIANA.

Section 4 Township 13 North, Range 2W



By Carr Hoate Deputy -
April - 1913

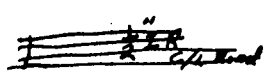
By C. Molinelli - Sept 14-1917

Submitted by Staniel Skantle
12-6-86

Requied M. Crocker 12-6-86

Corner	Stone Mark.	Acres.	Hun.	Bearing Trees.	Diam.	Courses.	Dist.
at X M	Iron Pipe			Scrub	3	S 50 1/4 W	38'
	i=17.41 South of B stone			elm	12	N 46 3/4 W	7'
	a=17.41 South of A "			Stone		South	17 3/4'

at B stone Cor.



Red Iron - 8" N. 24 3/4 W. 9.83 ft
 Ash 3" N. 48 1/2 E. 11.0 ft
~~corner post 55° W 30.7'~~
~~utility pole N 70° W 25.4'~~
~~corner post East 24.7'~~
~~Maple 20" S 80° W 90.4'~~

V SEE SEC 3-2

C	Stone 6" deep a 74' N of true corner	Twin Ash	20"	N 10° W	6.3'
		But Oak	26"	N 86° E	35.6'

E Stone w/ notch
6" deep

RECORD OF SURVEYS IN MORGAN COUNTY, INDIANA.

Section 5

Township 13

North, Range 2 West

REMARKS, &c., &c.	Corners.	Stone Mark.	Acres.	Hun.	Bearing Trees.	Diam.	Courses.	Dis.
By <i>Pickett</i>	At B				Walnut	20	S 31 E	27
		Stone cor.			Stone		S 40 W	25
					do		S 40 E	25
					Elm	14	S 80 E	27
					Beech	21	N 70 E	8
					Box Alder	14	S 50 W	30
					Plum	4	S 63 E	36
					Sugar	16	S 7 E	16
					W Oak	8	S 79 E	22
					W Walnut	16	S 80 W	26
					Willow	12	N 4 E	22
					Box Alder	14	N 64 E	16
					Plum	4	S 26 W	7
					S Ash	16	N 7 E	34
					Elm	7	N 65 W	41
					Beech	16	N 46 W	58
					"	15	N 70 W	50
					Plum	6	S 14 W	54
					"	6	N 24 E	50
					Hickory	8	N 42 E	38
					"	22	S 71 W	14
					"	14	S 89 E	66
		Stone cor.			Stone		S 16 E	21
					"		S 56 W	33
					"		South	37
					"		West	30
					Sugar	11	N 41 W	40
					Hickory	24	S 83 3/4 E	66
		Stone cor.			Stone		West	56
					"		South	40
					"		North	24
					Ash	20	S 72 3/4 E	41
					Box Alder	16	S 24 1/2 W	31
					Ash	15	N 8 E	150
					S. Oak	30	N 45 E	9 1/2
					Ash	7	East	63

C. G. H. Goss, Sept 16th 1892

Perpetuated stone cor. from old witnesses

U Stone cor

K " " Established

Perpetuated: J " " 11.47 also N of X stone N. 15th.

Ang. Johnson, 5/28/1902

X " " "

e " 12.40 ch. N. of X.

RECORD OF SURVEYS IN MORGAN COUNTY, INDIANA.

Section

6

Township

13

North, Range 2 West.

REMARKS, &c., &c.	Corners.	Stone Mark.	Acres.	In.	Bearing Trees.	Diam.	Courses.	Dis.
By Pickett at B								
Mr. Matt. " S ^v Stone cor.					Ironwood	5	S 62 E	24
					"	4	N 1 E	23
					Beech	12	S 78 E	57 1/2
					Hickory	19	N 11 W	41
" R					B Walnut	24	N 72 W	54 1/2
" F					Poplar	30	S 54 E	31 1/2
					Beech	15	S 35 E	5
" F Stone cor.					"	30	N 29 E	27 1/2
					Hickory	24	S 20 W	7 1/2
					Beech	15	S 78 E	24 1/2
" C					Stone		N 2 W	27
" D							S 47 E	49
" R " Englund					W Oak	30	S 38 E	30
" O " cor.					Blk Saw	2	N 61 E	33 1/2
" G " "					Cherry	3	S 70 E	20
" H " "					Beech	6	N 83 E	42
" I " "					Stone		North	30
" J " "					"		West	20
" K " "					Beech	10	N 57 E	49
" L " "					"	15	S 25 E	48
" M " "					"	18	S 44 E	24
" N " "					"	16	North	23
" Y " "					"	12	S 21 W	44
N Stone					"	16	N 53 E	34

RECORD OF SURVEYS IN MORGAN COUNTY, INDIANA.

Section 7 Township 13 North, Range 2 West

REMARKS, &c., &c.	Corners.	Stone Mark.	Acres.	Hun.	Bearing Trees.	Diam.	Courses.	Dist.
<p>Established by H. J. Craig</p>	At M ^o	Stone cor.			Beech ^{370 1/2}	20	N 26 W ⁵⁰⁰⁰ 18-11	49
	" O	" "			"	2	S 50 E	94 1/2
	" Y	" "			Plum	7	N 85 E	11
	" M	" "			Ash	8	N 37 W	82
	"	" "			do	7	N 12 E	81
	"	" "			Hickory	24	S 12 E	16
	"	" "			Ash	6	N 12 W	37 1/2
	"	" "			Beech	18	S 71 W	47
" H	"	Engraved with 1/4 I.		B Oak	5	S 10 W	44 1/2	

RECORD OF SURVEYS IN MORGAN COUNTY, INDIANA.

Section 8 Township 13 North, Range 2 West.

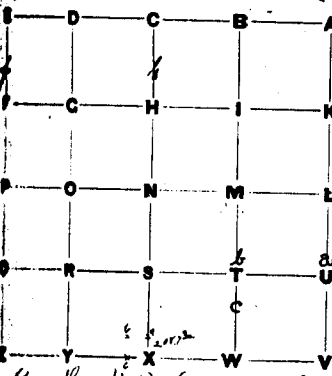
REMARKS, &c., &c.	Corners.	Stone Mark.	Acres.	Hun.	Bearing Trees.	Diam.	Courses.	Dist.
<p style="text-align: center;">Established by Pickett</p> <p style="text-align: right;">W. J. Craig</p>	at M				Beech	18	N 82° W	19
	B				"	14	N 20 3/8° E	-
	J				B Walnut	12	N 35° E	30
	Q				Sycamore	36	S 60° E	66
	Q				Beech	18	S 52 1/2° W	7
	Q				N Walnut	5	N 19° E	22 1/2
	Q				S Ash	7	S 84° W	5
	Q				do	8	S 81° E	22
	Q				Hickory	22	N 49° E	13
	Q				Sugar	8	S 9° W	40
<p>By H. A. Blank, Oct 4, 1919 O is 1500 dm North of L Aug 17-1921 1/2 = 2.75 ch. W of S</p>	A				Beech	18	N 86° W	23
	E				Hickory	8	N 42° E	38
	W Stone cor.				Stone		North	25
	T				"		West	20
	T				"		South	25
	T				"		East	20
	M.				Swim ash	16	S 27° W	29
	W.		20.25 = 1/2		Gray ash	10	N 73 1/2° W	114
	T.				Wht Elm	10	N 87 1/2° E	126
	T.				Wht Elm	10	N 48° W	---
<p>at a 11 Rods W of M Stone at 6 1/2 Rods W of J Stone at 60 Rods N of S Stone at 9 1/2 ch W of C Stone at 20 rods N of 2 Stone</p>	M.				do do	12	N 28 1/2° W	132
	W.				Beech	24	N 76 1/2° E	46
	T.				Wht oak	12	S 19 1/2° E	38 1/2
	T.				Beech	24	S 64 1/2° W	137 1/2
	T.				Stone		West	25
	T.				do		S 37° W	29
	T.				do		North	25
	T.				do		North	25
	T.				concrete pit		S 64° W	55
	T.				stake		East	6 1/2

RECORD OF SURVEYS IN MORGAN COUNTY, INDIANA.

Section 9 Township 13 North, Range 2 West

REMARKS, &c., &c. Corners. Stone Mark. Acres. Hun. Bearing Trees. Diam. Course. Dist.

Established by survey at D Stone cor.



at $1\frac{1}{2}$ chains N. of U. notch in saw bridge.
 at $1\frac{1}{2}$ chains N. of D. Stone $37\frac{3}{4}$ 33
 at $10\frac{3}{4}$ chains North of W. 22.31
 Stake in Big ditch.
 at a - 208 ft N. of X.
 at b - 208 ft N. of "

Stone East 25
 " West 25
 " East 25
 " West 25
 Stone N $41\frac{1}{2}$ E 32
 W. Oak Stump N 60 E 17
 Stone N 50 E 36
 South T post North 23
 Elm Stump 20 S 45 W 9
 Burr Oak 30 S 80 E 27
 Stone with witness North 43
 { oak 12 S 45 E 10
 { also 12 N 20 E 20
 Stone East 17

By H. H. Johnson Mar. 17. 1899

H. A. Blank, Oct. 4-15-1919
 survey for Fernie Parker
 et al.

L Stone N. 37 1/2 W 30 1/2
 N Stone - res. N. 50 E 30 1/2
 H Iron Rod to be replaced with cement post Walnut 10" N 88 W 11.76 1/2
 h Iron Rod to be replaced with cement post Iron Rod South 25
 f Iron Rod " " Sugar 10" South 11.45 1/2

at 7.822 ch. North of H.
 at 7.822 ch. North of F

H. A. Blank, 4/13, 1920

F Stone Walnut 5" S 15 W 22 1/2
 V Stone Walnut 18" N 79 1/2 W 35.14
 C Stone W. Cherry S 80 E 1.08
 Stone S 87 W 28
 A SEE SEC 3-2

RECORD OF SURVEYS IN MORGAN COUNTY, INDIANA.

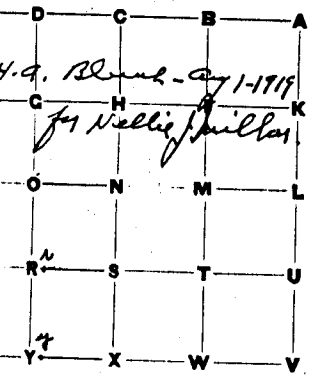
Section 10 Township 13 North, Range 2 West

REMARKS, &c., &c.	Corners.	Stone Mark.	Acres.	Inn.	Bearing Trees.	Diam.	Courses.	Dis.
Established by Craig at N Stone cor.					Beech	20	S 70° E	34 1/2
	Q	"	"	"	W Oak	40	S 27° W	49
	S	"	"	"	Elm	30	S 63° E	37
	H	"	"	"	Hackberry	20	N 63° E	37
	A	"	"	"	B Walnut	2	S 53° W	26
	K	"	"	"	do	3	N 20° W	22
	M	"	"	"	Beech	16	South	20
	U	"	"	"	W Oak	40	N 14° E	16
	V	"	"	"	Ash	10	S 18° W	31 1/2
	W	"	"	"	R. Oak	36	N 33° W	27
	X	"	"	"	Ash	8	S 26° E	45
Y	"	"	"	Beech	12	S 14° W	38	
Z	"	"	"	B Oak	30	N-E	37	
a	"	"	"	B Walnut	30	West	18	
b	"	"	"	Beech	15	S 31° E	12	
c	"	"	"	Poplar	36	N 58° W	15	
By CHNG res Oct 26 th 1893	Q	Stone Cor			Stone		S 38° E	50
					Stone		N 55 1/2° E	50
By H. J. Howard Sept 11 th 1900	d	"	"	Relevant	Stone		North	25
For Harmon's entry et al.	b	"	"	"	Stone		South	25
By Carle O. Gilbert	w	"	"	"	Gray Ash.	30	North	57
For James Millhorn et al.	m	Perp. Cor. Stone			W Oak	30	S 87° W.	57
					Apple Tree	3	S 71 1/2° E.	23
					Beech.	12	S 78 1/2° W.	68
					Bolder.		East.	9
H. A. Blunk, Apr 22-1911	I	stone			Wild Cherry	10"	S 84 1/2° E	22
M. E. Lambert Partitions.					stone		West	25
i is 4.77 1/2 ch S of I	i	"			"		North	26
					"		South	25
m = 10.65 1/2 ch S of I	m	"			Wild Cherry		"	15 1/2
					Stone		North	26
By H. A. Blunk Feb 26-1917	X	Stone Perpetuated			Stone		N 20° E	25
w is in creek 29.31 ch. N of W.	w	"			Stone		South	100
n is 6.25 West of w in creek.	n	"			Stone		"	170
x is 6.25 ch. west of n.	x	"			no witness			

RECORD OF SURVEYS IN MORGAN COUNTY, INDIANA.

Section 10 Township 13 North, Range Z West

REMARKS, &c., &c.	Corners.	Stone Mark.	Acres.	Hun.	Bearing Trees.	Diam.	Courses.	Dist.
Country. Apr 25-1727 to Curtis Set.	J	Stone			Sycamore	6"	S. 56-15 E	27'-7"
					R. Oak	30"	S. 73-0 W	58'-7"
H. G. Blount - Aug 1-1719	N	"			elm	6"	E.	17'-2"
for Nellie Phillips	L	all stone			gray oak	2 1/2"	W. 45 N	65'-4"
	C	SEE	SEC	3-X				6-2
	E	SEE	SEC	3-Z				9



RECORD OF SURVEYS IN MORGAN COUNTY, INDIANA.

Section 11 Township 13 North, Range 2 West.

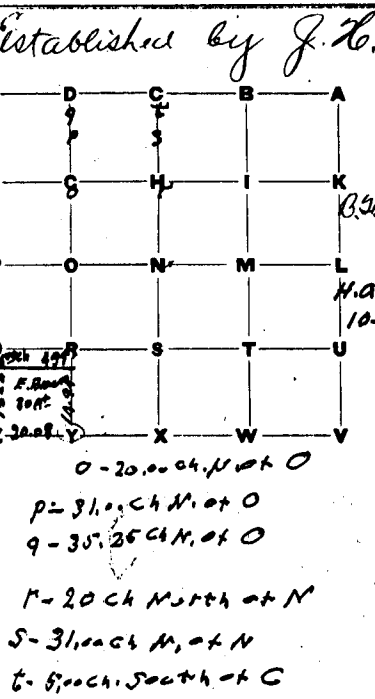
REMARKS, &c., &c.	Corners.	Stone Mark.	Acres.	Hun.	Bearing Trees.	Diam.	Courses.	Dist.
By M ^{rs} Mabb	At L	Stone bur.			Oak	4	S 81 W	36 1/2
		Stone			Beech	18	S 68 E	46
		"	"		"	16	S 28 E	53
		"	"		Elm	24	N 52 E	59
		"	"		B Oak	42	S 77 E	51
		"	"		Maple	18	N 86 W	23
		"	"		S. Oak	16	N 45 W	13
		"	"		Stone buried		S 45 W	30
		"	"		Stone		West	18
		"	"		"		East	16
		"	"		Oak	16	N 80 E	38
	"	"		"	16	N 32 E	52	
	"	"		"	"	"	23	
Ch. H. Goos Oct 6 th 1892	O	"			White Oak	20	South	27
	Y	"			Stone		S 20 W	20
		"			"		South	25
		"			"		North	25
H. A. Blunk Apr. 22-1811		"			White Oak	6	S 2 W	10
M. E. Lambert Partition		"			Stone		North	25
		"			Gray Oak	6	South	3
		"			Stone		North	25
		"			Stone		West	20
Sept 1. 1919 for W. Smith and others. Frank Smith Survey	L	Stone removed			Black Walnut		South 66 East	25 1/2
		"			Stone		South 2nd East	11
		"			"		East	19 1/2
		"			"			

✓ SEE SEC 14-A

RECORD OF SURVEYS IN MORGAN COUNTY, INDIANA.

Section 12 Township 13 North, Range 2 West

REMARKS, &c., &c.	Corners.	Stone Mark.	Acres.	Hun.	Bearing Trees.	Diam.	Courses.	Dist.
Established by J. L. Atch	U				Beech	20	N 11 W	23
					"	6	N 22 E	33
					"	18	N 58 E	45
					White Oak	3	N 85 W	37
					Malbury	12	N 62 W	62 1/2
					Topic	14	N 55 1/2 E	47 1/4
					M.W. cor of concrete wall		S 71 1/2 E	102
					BURROAK	24"	S 74 W	52 1/4
					M.W. cor of		S 73 1/2 E	19 1/2
					WILD CHERRY	15"	N 13 1/2 E	30 1/2
					BURROAK	24"	N 35 E	26
					STONE		E 95 0	22
					STONE		NORTH	25"
					Gray Ash	14"	S 7 1/2 E	33
					Gray Ash	28"	S. 80 W.	35
					Hickory	18"	N 54 1/2 W	40
					CAITAPA	12"	N. W.	36 ft.
					89 square gawed cedar post		S 10 W. 16 1/2"	
					3" EP		E 80 7	12 1/4"
					3" EP		S 75 W	28 1/2"
					Z	SEE	SEC 14-A	
					O	STONE	9.6"	Depth N 17° E 125.95' 1STORY BRICK WELLS
								N. 39 1/2° E 117.44' WATER WELL CASING
								S 56° E 87.51' CORNER OF CHURCH
								N 35° E 89.60' EDGE CONC. DRAIN BIN
								S 42° W 27.94' ANGLE IRON POST LEANING SW
								S. 64° E 24.81' CROSS CUT ON CONCRETE HEADER
								S 42° E 23.27' NEAR EDGE STEEL POST
								N 44° E 31.38' NAIL AND CAP IN WOOD COR. POST



For Dave Milham & Earl Brown
May 9 1952 - W.F. Smith

DEC 16 1980
STANLEY M. SHARTLE

SHARTLE - Jan 29 - 81

SHARTLE Jan 28 - 81
ENTERED BY
HAROLD COLLIER DEP.

RECORD OF SURVEYS IN MORGAN COUNTY, INDIANA.

Section 13 Township 13 North, Range 7 West

REMARKS, &c., &c.	Corners.	Stone Mark.	Acres.	Inch.	Bearing Trees.	Diam.	Courses.	Dist.
<p>Established by W. H. Craig</p> <div style="text-align: center;"> </div>	at N				Beech	18	N44E	15
	O				Burr Oak	17	N85W	34
	P				Beech	18	N34W	19
	Q				"	18	S54E	9
	R				Elm	20	S31W	11
	S				Sugar	14	N84E	29
	T				Lym	5	S24E	17
	U				Ash	4	N63W	18
	V				R Elm	24	N69E	14
	W				Beech	22	N30W	18
	X				Ash	28	N19W	16
	Y				Beech	18	S80W	27
	Z				"	16	S28E	53
					Elm	24	N52E	59

E SEE SEC 14-A

RECORD OF SURVEYS IN MORGAN COUNTY, INDIANA.

Section 14 Township 13 North, Range 2 West

REMARKS, &c., &c.	Corners.	Stone Mark.	Acres.	Hun.	Bearing Trees.	Diam.	Courses.	Dist.
marked by M ^r . Mabb	At B				Elm	1	S 41 W	54
	" M				W Oak	4	S 65 E	53
	" O				Stone		N 67 W	53
	" D	Stone cor.			Elm	6	N 30 E	20
	" U				Sugar	6	N 61 W	32
	" U				Stone		N 53 W	49
	" U				"		S 53 E	59
	" U				S Oak	6	N 48 W	66
	" U				Willow	1	N 43 E	20
	" U				W Oak	36	N 38 W	46
	" U				S Oak	2 1/2	East	46
J. S. H.	" U				Elm	15	N 60 W	13
	" U				"	12	S 14 W	14
C. Blank Apr 20-1911	Nb	Stone - Replicated			Stone		South	33
Robert Partition	G	"			Beech	20	S 81 3/4 W	47 1/2
	G	"			Walnut	15	S 8 1/2 W	57
	G	"			Elm	9	South	70
	G	"			Stone		West	25
6.30 Ch East of O	1	"			"		North	26
12.07 1/4 " " "	2	"			Sycamore		South	30
17.89 1/2 " " "	3	"			Stone		S 66 W	68
24.17 1/2 " " "	4	"			Spry Ash		N 2 1/2 W	26
31.00 " " "	5	"			Stone		N 49 1/2 E	33 1/2
6.30 " " " G	6	"			Spry Ash	2	South	24
2.09 1/4 " " "	7	"			Stone		S 1/4 W	24
7.87 1/4 " " "	8	"			Stone		South	24
4.17 1/4 " " "	9	"			"		"	29 1/2
0.99 1/4 " " "	10	"			"		North	23 1/2
	W	"			Hickory	20	South	24 1/2
0.07 1/2 " East " W	W	"			Stone		East	25 1/4
0.13 " North " W	W	"			Walnut	15	S 8 1/2 W	55 1/4
" " " W	W	"			Stone		East	25 1/4
" South " W	V	"			Wild Cherry		East	38 1/2
" " "	m	"			Stone		S 85 3/4 E	38 1/2
" " "	+	"			"		East	25
					"		West	25
					"		East	25
					"		West	25
					"		East	20
					Bur oak		North	20
					Stone		S 43 E	15 1/4
					Spry Ash	24	North	25
					Stone		S 41 E	27
					"		North	25
					"		South	25
					"		North	25
					"		South	25

RECORD OF SURVEYS IN MORGAN COUNTY, INDIANA.

Section **14**

Township **13**

North, Range **2 W**

REMARKS, &c., &c.	Corners.	Stone Mark.	Acres.	Hun.	Bearing Trees.	Diam.	Courses.	Dist.
	<p>A</p> <p>↖</p>	<p>1st IP Buried 1/4 RD.</p>			<p>cornerpost cornerpost utility pole</p>		<p>South N5E N75W</p>	<p>145' 180' 428'</p>
					<p>see New Ref Stone Pd 7-4-77 RYM</p>			

RECORD OF SURVEYS IN MORGAN COUNTY, INDIANA.

Section 15 Township 13 North, Range 2 West

REMARKS, &c., &c.	Corners.	Stone Mark.	Acres.	Hun.	Bearing Trees.	Diam.	Courses.	Dist.
Established by Pichett	U + M				Beech	8	N 30 E	58
	"	O			"	13	N 76 W	50
	"	"	"		Lynn	11	S 88 E	46
	"	"	"		Beech	24	N 50 E	58
	"	"	"		Chin	2	N 71 E	17
	"	"	"		do	5	S 79 W	25
	"	"	"		P. Oak	30	N 60 E	68 1/2
	"	"	"		do	34	S 60 W	67
	"	"	"		White Oak	4	S 63 E	21
	"	"	"		do	5	S 36 W	30
	"	"	"		Sycamore	3	South	8 1/2
	"	"	"		Stone buy		East	20
	"	"	"		Beech	18	S 40 E	22
	"	"	"		W. Beech	3	N 51 W	32
	"	"	"		Stone buy		East	20
	"	"	"		"		South	20
"	"	"		Beech	15	N 24 E	24	
"	"	"		Ash	5	S 24 W	60	
"	"	"		Beech	15	N 39 W	60	
"	"	"		"	6	S 60 W	68	
"	"	"		Stone		S 52 W	40	
"	"	"		"		S 52 E	62	
"	"	"		"		N 45 E	40	
"	"	"		"		S 45 E	24	
"	"	"		"		South	40	
"	"	"		"		East	40	
"	"	"		B. Oak	24	S 84 1/2 W	48 1/2	
"	"	"		Stone		North	50	
Survey for Jos. Milhon et al. Nov. 29 th & 30 th 1897. Chas Patent ^{er} James George, Chairman Present: Jos. Milhon, P. S. Curtis, E. O. Curtis, Wm. Smith, Houston Baldwin et. al. George W. Pearce Surveyor.	"	"		"	"			
Ch. H. Goes in Partition of Chunoweth Estate Sept 15 th 1892	"	"		"	"			
	"	"	12.27	ok	West of M			
	"	"	6.69	"	"			
	"	"	6.69	"	"			
	"	"	9.75	"	"			
	"	"	12.27	"	"			
	"	"	6.69	"	"			
	"	"	6.69	"	"			

RECORD OF SURVEYS IN MORGAN COUNTY, INDIANA.

Section 15 Township 13 North, Range 2 West

REMARKS, &c., &c.	Corners.	Stone Mark.	Acres.	Hun.	Bearing Trees.	Diam.	Courses.	Dist.
<p>W. H. Gross Sept 15th 1892</p> <p>map on opposite page</p> <div style="text-align: center;"> </div> <p style="text-align: right;">72 R 017</p>	A	Stone	4.00	chs.	North of D			
	"	K	"	5.55	"	West of J		
	"	L	"	4.70	"	East of D.		
	"	i	"	9.29	"	North of J.		
	"	F	"	9.29	"	" " G.		
	"	G	"	in center of quarter section				
	"	J	"	1/2	R to	E in line		
	"	D	"	1/2	E to	C in line.		
	"	P	"	went N 68 1/2° E				
		P	STONE (1" I.P. OVER)			NE COR NSE	114 2W	82' 5"
					UTILITY POLE	N 82W	41' 3"	
					NW COR LONG IN FRONT OF GARAGE	52 2E	89' 0"	
	O	STONE (1" I.P. OVER)			UTILITY POLE	N 5E	14' 0"	
					30" WALNUT	N 55W	54' 1"	
					UTILITY POLE	54 0W	40' 0"	

RECORD OF SURVEYS IN MORGAN COUNTY, INDIANA.

Section 16 Township 13 North, Range 2 West

REMARKS, &c., &c.	Corners.	Stone Mark.	Acres.	Hun.	Bearing Trees.	Diam.	Course.	Dist.
<p style="text-align: center; font-size: 1.2em;"><i>By Craig</i></p> <div style="text-align: center;"> </div>	at	Stone cor.			Hickory	2	S60W	22
	"	"	"		S Oak	2	N49E	50
	"	"	"		Poplar	3	N36W	32
	"	C	Engraved		Beech	24	S55E	50
	"	B	cor.		Gum	20	S76W	44
	"	"	"		Beech	18	N70E	17
	"	"	"		Ash	5	S30W	20
	"	SE	Engraved		Chn	8	N52E	179
	"	M	cor.		S Ash	4	S43W	22
	"	"	"		W Oak	5	N41E	39
	"	"	"		Beech	10	N12W	42
	"	"	"		B Oak	18	N24E	44
	"	"	"		Hickory	8	N68W	61
	"	"	"		Chn	7	N18E	32
	<p>Survey for He Bourne et. al. Apr 4th 1877 W.L. Miller Sur.</p> <hr/> <p>Survey for Jas. C. Blunk et. al. Dec. 20th 1898 Chainmen & Flagmen: Alex McCown, Abe Taylor, Jas. H. Robinson By K. Johnson, Surveyor.</p> <hr/> <p>For Redliff, Currier, Henderson, & Harvath</p> <hr/> <p>Earle O. Gilbert - 5-5-48 H.A. Blunk & Henry Whitlow Helpers</p>	"	"		"	R Chn	4	N26E
"		"	"		S Oak	6	N33W	5 1/2
"		L	"		Stone bur		East	20
"		"	"		"		South	20
"		N	Stone		Stone		North	25
"		"	"		"		West	25
"		E	Stone, Engraved		do		North	25
"		"	"		do		East	25
"		D	Stone cor.		do		West	25
"		"	"		do, eng.		East	50
"	F	Stone cor.		do, -		North	25	
"	"	"		do		East	25	
"	G	Stone cor.		do		West	25	
"	"	"		do		East	50	
"	H	Stone cor		do		North	25	
"	"	"		do		East	25	
"	C	Perpetuated Stone			Elm	15	N. 85 1/2 W	44
"	"	"			"	10	S. 53 1/2 E	29

RECORD OF SURVEYS IN MORGAN COUNTY, INDIANA.

Section 17

Township 13

North, Range 2 West

REMARKS, &c., &c.	Corners.	Stone Mark.	Acres.	Hun.	Bearing Trees.	Diam.	Courses.	Dis.
<p style="text-align: center;"><i>By W. L.</i></p>	at N				B Walnut	22	N 64 W	18
	D				A Beech	2	N 50 E	54
	O				R Elm	18	N 58 W	182
	Y				W Walnut	3	N 41 E	36
	P				Beech	14	N 64 E	10
	T				"	14	N 51 W	56
	U				Sugar	18	N 28 E	71
	V				"	24	N 51 E	107
	W				Beech	12	N 12 E	7
	X				B Oak	36	N 81 W	48
<p style="text-align: center;"><i>L. J. Craig</i></p>	L				Buckeye	16	N 63 E	12
	M				Hickory	24	N 52 W	19
	N				"	20	N 38 E	22
	O				Ash	3	N 20 W	56
	P				Buckeye	12	N 60 E	10
	Q				Hickory	16	N 64 W	24
	R				Elm	16	N 74 E	11
	S				Beech	18	N 84 W	26
	T				Elm	2	N 60 W	25
	U				Walnut	1	N 56 E	26
<p style="text-align: center;"><i>B. A. Butler</i></p>	I				Beech	20	N 74 W	4
	J				"	16	N 50 E	60
	K				W Oak	40	N 65 E	100
	L				Sycamore	8	N 8 W	134
	M				"	6	N 15 E	130
	N				Beech	15	N 71 1/2 W	65
	O				Chinquapin	36	N 16 1/2 W	100

RECORD OF SURVEYS IN MORGAN COUNTY, INDIANA.

Section 18 Township 13 North, Range 2 West

REMARKS, &c., &c.	Corners.	Stone Mark.	Acres.	Illum.	Bearing Trees.	Diam.	Courses.	Dist.
<p><i>Established by Craig</i></p> <pre> E — D — C — B — A F — G — H — I — K P — O — N — M — L O — R — S — T — U Z — Y — X — W — V </pre>	At <i>E</i>				<i>Sum</i>	2	<i>S 67° E</i>	2
	" <i>H</i>	<i>Stone cor.</i>			<i>Elm</i>	6	<i>S 13° E</i>	30%
	" <i>y</i>	" "			<i>Hickory</i>	18	<i>West</i>	30
	" <i>z</i>	" "			"	14	<i>S 12° W</i>	34%
	" <i>st</i>	" "			"	18	<i>N 58° E</i>	63
	" <i>o</i>	" "			<i>Ash</i>	20	<i>S 60° W</i>	2
	" <i>u</i>	" "			<i>Hickory</i>	4	<i>N 36° E</i>	4
	" <i>v</i>	" "			<i>Stone</i>		<i>East</i>	25
	" <i>w</i>	" "			"		<i>North</i>	30
	" <i>x</i>	" "			"			

RECORD OF SURVEYS IN MORGAN COUNTY, INDIANA.

Section 19 Township 13 North, Range 2 West

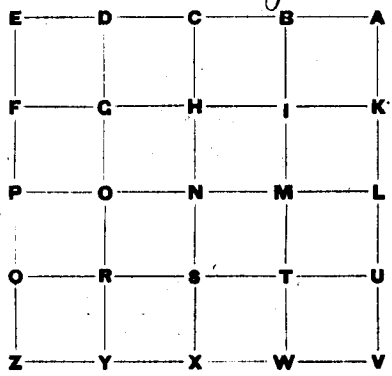
REMARKS, &c., &c.	Corners.	Stone Mark.	Acres.	Hun.	Bearing Trees.	Diam.	Courses.	Dist.
<p>By <i>Pichett</i></p>	<i>at M</i>				<i>Beech</i>	<i>18</i>	<i>N 25 E</i>	<i>4</i>
	<i>" M</i>				<i>Elm</i>	<i>36</i>	<i>N 62 W</i>	<i>32</i>
	<i>" I</i>				<i>Beech</i>	<i>20</i>	<i>N 35 W</i>	<i>27</i>
	<i>" B</i>				<i>"</i>	<i>16</i>	<i>S 85 E</i>	<i>27</i>
	<i>" D</i>				<i>W Oak</i>	<i>16</i>	<i>N 10 E</i>	<i>10</i>
	<i>" N</i>				<i>Beech</i>	<i>4</i>	<i>S 21 E</i>	<i>82</i>
	<i>" S</i>				<i>Ash</i>	<i>20</i>	<i>S 64 W</i>	<i>2</i>
	<i>" O</i>				<i>Beech</i>	<i>10</i>	<i>S 3 W</i>	<i>10</i>
	<i>" U</i>				<i>"</i>	<i>16</i>	<i>N 14 W</i>	<i>39</i>
	<i>" V</i>				<i>S Oak</i>	<i>5</i>	<i>N 77 E</i>	<i>35</i>
					<i>W Oak</i>	<i>4</i>	<i>S 46 W</i>	<i>64</i>
					<i>Apple tree</i>	<i>5</i>	<i>S 13 E</i>	<i>11</i>
					<i>W Oak</i>	<i>10</i>	<i>N 20 E</i>	<i>55</i>
					<i>Poplar</i>	<i>36</i>	<i>S 15 W</i>	<i>62</i>
					<i>Stone</i>		<i>East</i>	<i>25</i>
				<i>"</i>		<i>North</i>	<i>30</i>	
				<i>S Oak</i>	<i>6</i>	<i>S 64 W</i>	<i>17</i>	
				<i>Beech</i>	<i>24</i>	<i>S 55 E</i>	<i>45</i>	
				<i>S Oak</i>	<i>6</i>	<i>N 48 W</i>	<i>38</i>	
				<i>Beech</i>	<i>16</i>	<i>N 30 E</i>	<i>23</i>	
				<i>Stone</i>		<i>East</i>	<i>25</i>	
				<i>Beech</i>	<i>24</i>	<i>S 28 E</i>	<i>29</i>	
				<i>"</i>	<i>12</i>	<i>N 68 E</i>	<i>60</i>	
<i>H.A. Blunk Feb. 9, 1910</i>	<i>e</i>	<i>stone</i>			<i>stone</i>		<i>North</i>	<i>25</i>
<i>c 8.62 ch south of B</i>	<i>f</i>	<i>"</i>			<i>"</i>		<i>South</i>	<i>50</i>
<i>8.82 south of B</i>	<i>b</i>	<i>"</i>			<i>Maple</i>	<i>12</i>	<i>S 21 W</i>	<i>111 ft</i>
<i>d 7.94 ch. south of c</i>	<i>d</i>	<i>"</i>			<i>W. Oak stump</i>		<i>North</i>	<i>29.7</i>
<i>7.96 south of B</i>	<i>e</i>	<i>"</i>			<i>stone</i>			

RECORD OF SURVEYS IN MORGAN COUNTY, INDIANA.

Section 20 Township 13 North, Range 2 West

REMARKS, &c., &c.	Corners.	Stone Mark.	Acres.	Hun.	Bearing Trees.	Diam.	Courses.	Dist.
Established by Richitt	A	N			Beech	24	N 25 E	13
					"	30	S 38 E	50
					"	36	N 68 W	26
					Sycamore	36	S 44 W	33
					Beech	18	N 72 E	27
					"	24	S 37 W	11
					Sycamore	8	West	21 1/2
					B. Walnut	7	S 76 E	35
					Mulberry	8	S 62 W	82
					B. Oak	16	S E	53
					Stone		North	30
					W Oak	12	S 30	27
					Small Oak	20	N 72 E	26
					Sugar	10	N 77 1/2 W	43
					"	5	N 25 E	17
					Stone	-	South	25
					"	-	East	8
					Walnut	5	S 25 E	31
					Stone	-	West	25
					"	-	North	25
					"	-	West	25
					"	-	South	25
					"	-	East	25
					"	-	South	25
					"	-	East	25
					"	-	North	35
					"	-	South	25
					"	-	West	25
					"	-	North	29

By *Hyck Johnson*, 9/20/1901.
John Anderson et al.
 Chairman of Ed Adams
 Survey (Will Franklin)



M
 O
 B Stone cor.
 C " "
 G " "
 H " "
 I " "
 J " "
 K " "
 L " "
 M " "
 N " "
 O " "
 P " "
 Q " "
 R " "
 S " "
 T " "
 U " "
 V " "
 W " "
 X " "
 Y " "
 Z " "

RECORD OF SURVEYS IN MORGAN COUNTY, INDIANA.

Section 21 Township 13 North, Range 2 West.

REMARKS, &c., &c.	Corners.	Stone Mark.	Acres.	In.	Bearing Trees.	Diam.	Courses.	Dist.
By W. H.	at M				Elm	12	N 52° E	30
	"				"	15	S 68° W	44
	"				Willow	12	S 20° E	13 1/2
	"				W. Thorns	3	North	1
	"				Beech	18	S 5° E	26
	"	SE Stake						
	"	Y Stone cor.						
	"	Q " "			B Walnut	4	N 58 3/4° E	100
	"	R " "			Stone		N 46° E	45
	"	" " "			"		S 76 1/2° E	36
	"	a " "						
	"	B " "			W Hickory	18	N 34° W	49
	"	" " "			Beech	15	S 65° E	60
	"	Y " "			R Oak	30	N 88° E	46
	"	" " "			do	36	S 46° E	90 1/2
	V	Buggy axle			Stone		South	32 1/2
	"	" "			"		North	33 1/2
	U	" "			"		"	25
	"	" "			"		"	25
	L	Iron Rod 3' long.			"		East	18
	"	" "			"		West	18
	K	Stone			"		East	25
	"	" "			"		North	25
	M	Buggy axle			"		"	25
	"	" "			"		"	25
	B	Stone			Buggy Axle		South	25
	"	" "			Stone		South	20
	"	" "			"		North	30 1/2
	O	CHECK			AS 4	12	N 87 1/2° W	35
	N	Stone 6' long.			Iron Pipe (Bic)		WEST	10
	"	" "			I.P. (Bored 12")		EAST	10
	C	STONE			ANGLE IRON POST IN CORN		S 20° E	57
	"	" "			NE COR TILE UTIL. OLD		S 60° W	107
	"	" "			COR POST		N 85° W	54 1/2

By C. H. H. Sons Deputy
for Earle O. Hebert 1907

Feb. 1967 Miller

RECORD OF SURVEYS IN MORGAN COUNTY, INDIANA.

Section **22** Township **13** North, Range **2 West**

REMARKS, &c., &c.	Corners.	Stone Mark.	Acres.	Hun.	Bearing Trees.	Diam.	Courses.	Dist.
<p style="text-align: center;"><i>By Craig</i></p>	at H	stone			Beech	4	N62W	86
	" J	" cov.			stone		N66E	21 1/2
	"	"			Beech	12	N12W	34
	"	"			stone		N44E	23
<p>Survey for Jas. Milton et al. Nov 29th & 30th 1887. Elias Patten and James George, Chairmen. Present Jas. Milton, P. D. Curtis, E. D. Curtis Wm. Smith, Henson Baldou et al. J. W. Parce Surveyor.</p> <p style="text-align: center;"><i>Ch. 14 Laws Apr 5th 1893</i></p> <p style="text-align: center;">REF. OK. 2/7/1965. CDM.</p> <p style="text-align: center;"><i>By H. B. Blunk, Jan 29th 1907</i></p>	" K	stone			stone		West	30
	" I	"			"		North	20
	" J	"			"		North	20
	" H	"			"		West	30
	" G	"			Burr Oak	-	S24E	26
	" G	"			stone		North	20
	" G	"			"		N45E	27
	" G	"			"		N45W	32
	" M	"			"		North	22
	" N	"			"		West	22 1/2
	" S	"			"		North	18
	" S	"			"		N78E	30 1/2
	" R	"			"		West	21 1/2
" O	"			"		East	18 1/2	
" O	"			"		North	32 1/2	
" O	"			"		East	20	
" O	"			"		East	26	
" O	"			"		South	28 1/2	
" a	"	stone			stone		North	44
" a	"	stone			"		East	41 1/2

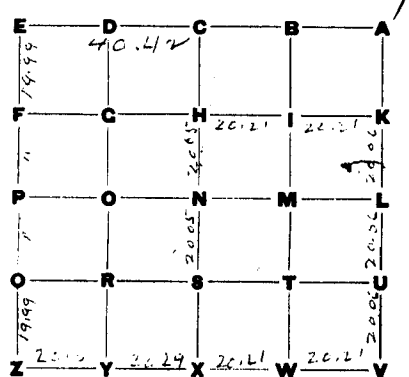
{ a
 9.75 3/4
 14.75
 17.5
 21.25

RECORD OF SURVEYS IN MORGAN COUNTY, INDIANA.

Section 23

Township 13

North, Range 2 West

REMARKS, &c., &c.	Corners.	Stone Mark.	Acres.	Hun.	Bearing Trees.	Diam.	Courses.	Dist.
By Chas H Goss April 4 th 1893	at G	Stone			Stone		N 31° E	20
	G	"			"		East	19
	H	"			"		S 50° E	42
	I	"			"		N 47° E	60
	J	"			"		West	36
	K	"			"		East	47
	L	"			"		N 53° W	49
	M	"			"		S 70° E	47
	N	"			"		N 70° E	30
	O	"			"		S 70° W	26
	P	"			"		West	20
	Q	"			"		South	20
	R	"			"		North	20
	S	"			"		East	20
	T	"			"		South	20
	U	"			"		West	20
	V	"			"		N 45° W	50
	W	"			"		N 45° E	50
	X	"			"		South	20
	Y	"			"		East	20
	Z	"			"		North	16
		"			"		South	10
		"			"		North	20
		"			"		East	20
		"			"		East	20
		"			"		North	20
		"			"		East	20
		"			"		East	20
		"			"		S 45° E	50
		"			"		S 45° W	50
		"			"		N 60° E	50
		"			"		S 60° W	50
		"			"		North	20
		"			"		West	20

R Oak N 21° E 47
 Beech " S 16° W 20

RECORD OF SURVEYS IN MORGAN COUNTY, INDIANA.

Section 24 Township 13 North, Range 2 West

REMARKS, &c., &c.	Corners.	Stone Mark.	Acres.	Hun.	Bearing Trees.	Diam.	Course.	Dist.
By <i>Ch. H. Goss</i> April 6 th 1843		At <i>Gyp. Stone</i>			<i>Stone</i>		<i>N 45 E</i>	<i>40</i>
		<i>L</i>			"		<i>245 W</i>	<i>40</i>
		"	<i>L</i>			"	<i>North</i>	<i>14 1/2</i>
		"	<i>W</i>			"	<i>West</i>	<i>10 1/2</i>
		"	<i>G</i>			"	<i>West</i>	<i>21</i>
		"	<i>G</i>			"	<i>N 71 1/2 E</i>	<i>17</i>
		"	<i>H</i>			"	<i>West</i>	<i>25 1/2</i>
		"	<i>H</i>			"	<i>East</i>	<i>23 1/2</i>
		"	<i>M</i>			"	<i>North</i>	<i>16</i>
		"	<i>M</i>			"	<i>West</i>	<i>16</i>
		"	<i>L</i>			"	<i>North</i>	<i>20</i>
		"	<i>L</i>			"	<i>South</i>	<i>20</i>
		"	<i>M</i>			"	<i>West</i>	<i>24</i>
		"	<i>M</i>			"	<i>North</i>	<i>22</i>
		"	<i>J</i>			"	<i>S 64 W</i>	<i>26</i>
		"	<i>J</i>			"	<i>N 58 E</i>	<i>20</i>
	"	<i>S</i>			"	<i>North</i>	<i>16</i>	
	"	<i>S</i>			"	<i>West</i>	<i>16 1/2</i>	
	"	<i>R</i>			"	<i>West</i>	<i>18</i>	
	"	<i>R</i>			"	<i>East</i>	<i>13 1/2</i>	
	"	<i>R</i>			"	<i>S 58 1/2 E</i>	<i>30 1/2</i>	
	"	<i>R</i>			"	<i>S 42 1/2 W</i>	<i>40</i>	
<i>Craig</i>		<i>R</i>			<i>Beech</i>	<i>4</i>	<i>N 13 W</i>	<i>40</i>
<i>B. J. Butler</i>		<i>R</i>			<i>Hickory</i>	<i>24</i>	<i>N 6 E</i>	<i>42</i>
		<i>R</i>			<i>Stone</i>	<i>12</i>	<i>S 17 W</i>	<i>11</i>
		<i>R</i>			<i>R. Oak</i>	<i>—</i>	<i>N 35 E</i>	<i>59</i>
		<i>R</i>			<i>Iron Post</i>	<i>—</i>	<i>N 43 W</i>	<i>24 1/2</i>
		<i>R</i>			<i>Iron Post</i>	<i>—</i>	<i>N. 41 1/2 E.</i>	<i>21 1/2</i>
<i>H. A. Blunk, Jul. 3 - 1924</i>		<i>B.</i>						

RECORD OF SURVEYS IN MORGAN COUNTY, INDIANA.

Section 25 Township 13 North, Range West

REMARKS, &c., &c.	Corners.	Stone Mark.	Acres.	Inn.	Bearing Trees.	Diam.	Courses.	Dist.
<p>Established by Craig at M</p>								
	L	Stone cor.			Beech	6	S33E	80
					Poplar	6	N37W	33
					S Ash	10	S87W	19 1/2
					Maple	10	S39E	31 1/2
					S Oak	5	N17E	31
					Hickory	6	S42E	7
					Burr. Oak	16	S10W	74
					S Ash	10	N14W	10
					B Oak	3	N17E	43
					Hickory	4	N20W	23
					B Oak	3	N59E	34
					do	16	S18W	52
					do	20	N35W	30
					S Oak	16	N33W	67
					Beech	8	S49E	16
					Poplar	12	NW	24
					S Oak	15	SW	24
<p>Carte O Gilbert 10-13-1944</p>	y.							

RECORD OF SURVEYS IN MORGAN COUNTY, INDIANA.

Section **26** Township **13** North, Range **2 West**.

REMARKS, &c., &c.	Corners.	Stone Mark.	Acres.	Inch.	Bearing Trees.	Diam.	Courses.	Dist.																	
<p style="text-align: center;">By Mr. Mabb</p>	A	B	C	D	E	F	G	H	I	K	L	M	N	O	P	Q	R	S	T	U	V	W	X	Y	Z
	at B					Beech	10	S 35 E	66																
	" B. Stone 7/8					do	12	East	42																
	" C " 7/4					Elm	12	N 14 W	7																
	" D " 7/6					do	18	S 24 E	23																
	" E " 7/8					Sycamore	10	N 62 E	56																
	" F " 7/6					"	7	N 84 W	136																
	" G " 7/6					Beech	20	N 31 W	11																
	" H " 7/8					Hickory	8	S 71 W	44																
	" I " 7/6					Elm	10	N 44 E	57 1/2																
	" J " 7/6					R. Oak	16	N 1 1/2 W	19																
	" K " 7/6					Hickory	4	N 69 W	23																
	" L " 7/6					R. Oak	14	S 81 W	15																
	" M " 7/4					Walnut	7	S 50 E	52																
	" N " 7/4					"	3	N 3 1/2 E	33																
	" O " T. 3. R. 2 W					Oak	6	N 54 W	26																
	" P " 7/6					Elm	6	S 70 E	46 1/2																
	" Q " 7/6							South	26																
	" R " 7/6					Beech	14	N 26 1/2 E	21																
	" S " 7/8					Ash	6	N 88 W	60																
" T " 7/6							N 57 E	49 1/2																	
" U " 7/6					Ash	7	S 11 E	40																	
" V " 7/6					R. Oak		N 21 E	47 1/2																	
" W " 7/6					Beech	18	S 16 W	20																	
" X " 7/6					Hickory	6	N 64 W	28																	
" Y " 7/6					"	14	S 40 E	106																	

RECORD OF SURVEYS IN MORGAN COUNTY, INDIANA.

Section 21 Township 13 North, Range 2 West

REMARKS, &c., &c.	Corners.	Stone Mark.	Acres.	Hun.	Bearing Trees.	Diam.	Courses.	Dist.
<p style="text-align: center;">Established by N.C.</p> <p style="text-align: center;">J.S. Hoogeland</p> <p style="text-align: center;">Benj. F. Butler</p> <p style="text-align: center;">Edgar A. Bourne</p> <p style="text-align: center;">By H.A. Blunk, Dec 17/1919</p> <p style="text-align: center;">is 722 ft. West of C.</p> <p style="text-align: center;">p. is 637 ft. North of C.</p> <p style="text-align: center;">is 637 ft. North of o and 722 ft West of p.</p> <p style="text-align: center;">H.A. Blunk, Feb 10-1932</p> <p style="text-align: center;">Survey of Stockwell Road</p>	at O				Hickory	18	S 71° E	19
	" R				Beech	18	N 75° W	37
	" Q				Hickory	18	N 45° W	1 1/2
	" C				"	15	East	26
	" A				Beech	24	N 45° E	10
	" J	Stone	7/6		"	24	S 5° W	17
	" B	"	7/8		"	4	N 62° W	62
	" P	"			Stone		N 66° E	21 1/2
	" G	"	cor.		Beech	15	S 3° W	21
	" F	"	"		Ash	4	S 83° E	17
	" H	"	"		Hickory	3	N 26° E	45
	" I	"	"		Beech	18	S 10° E	36
	" K	"	"		Sycamore	3	S 66° E	45
	" L	"	"		"	5	S 25° W	88
	" M	"	"		Oak	6	S 3 1/2° E	50
" N	"	"		Stone		South	24	
" O	"	"		"		North	23	
" P	"	"		"		N 46 1/2° E	50	
" Q	"	"		"		South	50	
" R	"	"		"		S 27 1/2° W	32	
" S	"	"		"		N 27 1/2° E	29	
" T	"	"		"		S 6 5° E	8 1/2	
" U	"	"		N. Fork Cherry	8	N 5 1/2° E	42	
" V	"	"		Cherry	12	N 45° W	61	
" W	"	"		G. Ash	8	S 68 1/2° E	71	
" X	Stone			Stone		S 18° W	20	
" Y	Stone			Stone		N 37° E	28	
" Z	"			Stone		South	16 1/2	
"	"			"		North	30 1/2	
"	"			"		North	12	
"	"			"		West	25	
"	"			"		East	17	
"	"			"		South	25	
"	"			White oak	15	S 89° W	76 1/2	
"	"			"	20	S 4 1/2° E	75 1/2	

RECORD OF SURVEYS IN MORGAN COUNTY, INDIANA.

Section 27 Township 13 North, Range 2W

REMARKS, &c., &c.	Corners.	Stone Mark.	Acres.	Hun.	Bearing Trees.	Diam.	Courses.	Dist.
	<p>W.</p> <p>M</p>	<p>old stump</p>			<p>Elm</p> <p>White Oak</p>	<p>14"</p> <p>24"</p>	<p>S 88° W.</p> <p>S 41½° E.</p>	<p>23 ft</p> <p>32 ft 9"</p>

RECORD OF SURVEYS IN MORGAN COUNTY, INDIANA.

Section 28 Township 13 North, Range 2 West

REMARKS, &c., &c.	Corners.	Stone Mark.	Acres.	Hun.	Bearing Trees.	Diam.	Courses.	Dist.	
<div style="display: flex; align-items: center;"> <div style="flex: 1;"> <p><i>Established by W. Keadley</i></p> <p><i>B. L. Butler</i></p> </div> <div style="flex: 1; padding-left: 10px;"> <p>At J</p> <p>" W</p> <p>" S</p> <p>" a Stone cor.</p> <p>" B</p> <p>" J</p> <p>" C</p> <p>" T</p> <p>" e</p> <p>" P Stone</p> <p>" E " cor.</p> <p>" A</p> <p>" " "</p> <p>" B</p> <p>" " "</p> <p>" U</p> <p>" " "</p> <p>" SE</p> <p>" H</p> <p>" L</p> <p>" O</p> <p>" " "</p> <p>" C</p> <p>" " "</p> </div> </div>					Beech	24	N 88 E	26	
						"	—	N 42 W	30
						"	30	N 80 E	7
						"	22	West	22
						W Oak	20	N 67 E	42
						Ash	2	S 6 W	33
						W Oak	3	N 78 W	22
						Ash	4	N 33 E	17
						Beech	3	S 67 E	61
						"	18	S 57 W	42
						R Oak	18	S 94 W	50
						B Oak	10	N 12 W	94
						Beech	6	N 7 W	148
						Stone		North	20
						"		South	20
						Beech	12	N 23 E	36
						Stone		N 14 E	65
						Maple	8	S 75 W	11
						B Oak	14	N 67 W	112
						R. Bud	10	N 69 W	56
					Stone		South	10	
					B Walnut	4	S 20 W	33	
					G Ash	10	S 9 W	56	
					Stone		S 43 W	30	
					"		N 42 W	20	
					Hickory	14	S 16 E	180	
					G Ash	8	N 25 E	17	
					Stone		South	6	
					"		North	6	
					Elm	10	S 22 W	63	
					Beech	20	S 1 E	84	
					G Ash	12	S 22 E	36	
					Stone 17x	10	North	26	
					R Oak	16	S 10 W	107	
					Stone		North	26	

RECORD OF SURVEYS IN MORGAN COUNTY, INDIANA.

Section 28 Township 13 North, Range 2 West

REMARKS, &c., &c.	Corners.	Stone Mark.	Acres.	Hun.	Bearing Trees.	Diam.	Courses.	Dist.
By B. J. Butler	at M	Stone						
					Stone 16x13		S 55° W	40
					" 21x12		N 36 3/8° E	46
	" Me	"			R Hickory	12	N 17° E	180
	" Z	"			G Ash	12	N 28° E	69
	By H. K. Johnson 4/25/1900	"			Hickory	10	N 36° E	67
	" C	"			Stone		S 38° E	20
	H.A. Blunk 3/10, 1910	"						
	X	Stone			Gray ash	20	N 37 1/2° E	174
	S	"			Cedar		N 57 1/2° W	29
					Stone		East	21
					"		West	29
	Y	"			"		South	19
	R	"			"		North	25
					"		East	25
					"		West	15
	L	"			"		West	25
					"		East	35
By H.A. Blunk, Deputy Survey 2/1919 L is 12.13 1/2 ch. West of L K is 12.33 West of K.	M.	Stone			Hickory	18	N 22° E	180 lbs
	L	Stone			Stone		North	29
	K.	Stone					South	18
					Stone		East	20
					"		South	50
	M.	Stone			one corner post		S	16'
		(1/2 I.P. over)			"		N	23 1/2'
By Reginald M. Cusker 7-10-23-86 X to N 7 N 00° 07' 55" W D 2638.90'	N.	Stone Fd Sandstone 0.7" W x 0.9" L x 0.4" D 3/4" Iron Pipe Over			RR Nail One Post		N 04-03-57E	37.08'
					Rebar in One Mon		N 22-50-08E	36.26'
					Rebar in One Mon		S 41-35-34W	46.81'
					PK Nail in One Post		S 47-24-37W	45.22'
	X	RR spike Set in St Hwy #42			Rebar in One Mon		N 87-43-00E	13.90'
					Center Cone Post		N 88-25-07W	24.23'

RECORD OF SURVEYS IN MORGAN COUNTY, INDIANA.

Section 29 Township 13 North, Range 2 West.

REMARKS, &c., &c.	Corners.	Stone Mark.	Acres.	Hun.	Bearing Trees.	Diam.	Courses.	Dist.
<p>Established by J. J. Hoogeland</p> <p style="text-align: center;">B. A. Butler</p>	At N Stone 74				Ash	4	N 75 3/4 E	23
	" M " 78				Ash	20	N 12 E	58
	" B				Beech	6	N 76 W	73
	" J " 76				B. Walnut	8	South	181
	" S " 76				Elm	8	N 62 E	4 1/2
	" B " 76				"	14	N 72 W	24 1/2
	" a " 76				Ash	5	N 61 W	74
	" K " 76				Oak	4	S 87 1/2 W	68
					Beech	14	N 62 E	36
					Poplar	5	N 62 E	26
By H. A. Blunk, 3/10, 1910				Beech	16	N 27 E		
				"	14	S 37 W	17	
				Stone 36 x 27	Aug. 20. N 37 1/2 W	9 1/2		
				B. Walnut	8	N 72 1/2 W	61	
				Elm	16	N 84 W	61 1/2	
				stone		North	26 1/2	
				"		South	10	
				"		East	25	
				"		South	25	
just lined North and South	E ^{20.04} N 1/2 S	"				East	25	
By Carr House Dpt, Apr 26-11	O	"			stone	South	50	
					"	West	50	
or 6.80 west of O and in old bed	a	"			stone	East	100	
	N	"				South	32 1/2	
	S	"			stone	East	32 1/2	
					"	West	41	
	R	"			"	South	21 1/2	
					"	S 68 1/4 E	21 1/2	
	M	"			Iron Post in Cement	South	33 1/2	
					Stone	S.W.	46 1/2	
					Sugar	24		
					conc. Post	North	15 1/2	
L. tom. 20.13 Ch.					w. end. s.w.			
Canatsey - Mar 14 - 1955	L.	old stone			Wing wall Br.	East	122	
M to N. 20.22	N	stone						
N. to O = 20.22	O	stone						

RECORD OF SURVEYS IN MORGAN COUNTY, INDIANA.

Section 31 Township 13 North, Range 2 West

REMARKS, &c., &c.	Corners.	Stone Mark.	Acres.	Hun.	Bearing Trees.	Diam.	Courses.	Di.	
Established by W. H.	A B				Ash	5	N60E	11	
	"	I			G Ash	6	S18W	8	
	"	J			Beech	24	S55E	24	
	"	K			"	20	N60W	13	
	"	L			"	24	S47W	17	
	"	M			"	30	N65E	4	
	"	N			Ash	3	N4W	3	
	"	O			Beech	3	S86E	7	
	"	P			W Oak	36	N61W	13	
	"	Q			do	30	S81E	5	
	"	R			Beech	15	S33W	2	
	"	S			Ash	10	S22E	2	
	"	T			W Oak	40	S24E	5	
	"	U			Ash	20	S4W	26	
	"	V			Hickory	6	S84W	36	
	"	W			Sugar	15	N70W	37	
	"	X			Beech	40	S35W	4	
	"	Y			Elm	4	N36E	3	
	"	Z			W Beech	6	N39W	3	
	<p style="margin-left: 20px;">H. K. Johnson J. J. Rhoads Oct-15-1902</p>	"	E			H. Mulberry	8	N14W	8
		"	P	Stone cov.		W Oak	30	S60E	24
"		X	" "		W Hickory	24	S22W	4	
"		I	" "		S Stone		West		
"		I	" "		Elm	15	N86W	16	
"		I	" "		Oak	40	S62W	17	
"		N	1" IRON PIPE		Stone		North		
"		N	"		MAPLE	13"	N70W	18	
"		N	"		SPICE HICK	5"	S10W	8	
"		N	"		MAPLE	10"	E	25	
"	H	ENG STONE (1" PIPE OVER)		SUGAR	8"	N20W	16		
"	H	"		SHELL HICK	7"	S	9		
"	H	"		SYCAMORE	8"	N45E	5		

RECORD OF SURVEYS IN MORGAN COUNTY, INDIANA.

Section 32 Township 13 North, Range 2 West

REMARKS, &c., &c.	Corners.	Stone Mark.	Acres.	Hun.	Bearing Trees.	Diam.	Course.	Dist.	
<div style="font-size: small;"> <p>Established by W. Hoady. W J</p> </div>					Beech	18	N83W	20	
					"	"	14 N78E	25	
					"	"	15 West	43	
						Elm	30	N18E	20
						POak	5	N14 1/2 W	50
						Wood Stump	24	N58 1/2 W	57
						Elm	15	N22W	4 1/2
						"	36	N27 3/4 E	60
						Hickory	-	N41W	51
						WOak	30	N11W	68
						Stump of B. Walnut	24	N15 1/2 E	26 1/2
						B. Walnut	4	S52 3/4 E	38
						"	4	N31W	57 1/2
						Poplar	48	N3 1/2 W	102
						Beech	10	South	7
					Stone		North	200	
					Walnut	5	N2° E	47	
					Stone		South	22 1/2	
					Do		West	25	
					Elm	15	N86 7/8 W	169	
					Oak	8	West	29 1/2	
					stone		North	32 1/2	
					Oak	24	S. 5° W	15 1/2	
					sugar	26	S. W.	20 1/2	
					Catalpa	10	N. E.	26 1/2	
					state.		Stake 26 1/2 feet north of corner.		
					Iron Post		North	24 1/2	
					stake.	Iron rod in fence	1 1/2 feet north of corner		
					old stone in Road	stone	North	50 W	
					old stone	walnut	South	50 W	
						6"	N. E.	78 1/2	
					"	10"	S. W.	10 1/2	
					Steel post	-	North	24	

Henry Johnson Oct-15-1902
J. J. Rhea et al.

Wilbur & Smith March 20th-1927
James Ogle and other.
from O to G 20.09 chains
from Z to V 80.36 chains

from O to Y 40.12 chains.
from Z to Y 20.09 chains

from O to N 20.09 chains
from Z to X 40.18 chains
from X to Y 40.18 chains.

Canatsey - Apr. 29, 1958
For Park Ogle

RECORD OF SURVEYS IN MORGAN COUNTY, INDIANA.

Section

Township

North, Range

REMARKS, &c., &c.	Corners.	Stone Mark.	Acres.	Hun.	Bearing Trees.	Diam.	Courses.	Dist.
<p>From \odot top. 20.08</p> <pre> E — D — C — B — A F — G — H — I — K P — O — N — M — L Q — R — S — T — U Z — Y — X — W — V </pre>	P	stone pilaster			Walters cemetery		S. 22° W	52 1/2 L
	P to F = 20.00	"	"		E. side Steps		57° W	81 L
	E	old Stone			North side			Post-end of fence
	F	old Stone			E. side old Walnut			Post Stump-

RECORD OF SURVEYS IN MORGAN COUNTY, INDIANA.

Section 33 Township 13 North, Range 2 West.

REMARKS, &c., &c.	Corners.	Stone Mark.	Acres.	In.	Bearing Trees.	Diam.	Courses.	Dist.
<p>Established by <u>at G</u></p>	<u>at G</u>				Hickory	25	N16W	3
	<u>R</u>				B Oak	10	N46 3/4 W	33 3/4
	<u>S</u>				Beech	15	S44W	2 1/2
	<u>D</u>				"	18	North	11
	<u>U</u>				"	15	N20W	15
	<u>V</u>				"	6	S60E	21
	<u>W</u>				"	20	S77W	31
	<u>X</u>				B Oak	30	S65E	18
	<u>Y</u>				Stone		East	50
	<u>Z</u>				Stone buried		North	25
		<u>B</u>			"		West	50
		<u>C</u>			Hickory	5	N6W	36
		<u>H</u>			Beech	12	S50E	56
		<u>S</u>			"		S32 3/4 W	100
		<u>T</u>			"	20	N81 3/4 E	48
		<u>U</u>			Oak	24	N27 1/4 W	51 1/4
		<u>V</u>			Ash	8	S48 3/4 E	146 1/2
		<u>W</u>			Beech	14	N6W	206
		<u>X</u>			"	18	S39 3/4 W	109
		<u>Y</u>			B Walnut	10	N83 3/4 E	38 1/2
	<u>Z</u>			Ash	6	S29 1/2 W	30	
				"	3	N76W	34 1/2	
				Beech	20	S94 1/4 E	39	
				Oak	24	N39E	40	
				Beech	10	N26E	17 1/4	
				Sugar	4	N6E	22 1/2	
				Ash	5	S61 3/4 E	3	
				Oak	5	S83 1/4 W	5	
				Ash	8	North	26 1/2	
				W Oak	12	N22W	21	
				Walnut	4	S22W	29 1/2	
				Oak	20	S33 1/4 W	17 1/2	
				Walnut	6	S88E	117	
				Beech	7	S32 1/2 W	73	

RECORD OF SURVEYS IN MORGAN COUNTY, INDIANA.

Section 33 Township 13 North, Range 2 West

REMARKS, &c., &c.	Corners.	Stone Mark.	Acres.	Hun.	Bearing Trees.	Diam.	Courses.	Dist.
By <u>Leslie & Craig</u> <u>map on opposite page</u>	at M	Stone Edged	center of section				33	
<p style="margin-left: 20px;">E Sliger's 5 Acre Lot</p> <p style="margin-left: 20px;">Whittaker Lot</p>	"	G			Beech	18	N 75° E	45 1/2
	"	H			Oak	30	S 46° W	50
	"	I			Walnut	8	S 32° W	52 1/2
	"	J			"	12	N 12 1/2° W	14 3/2
	"	K			"	3	N 45 1/2° E	28
	"	L			Sassafras	1 1/2	S 42 1/2° E	3 1/2
	"	M			Beech	22	N 67° W	32 1/2
	"	N			"	-	N 27° W	53
	"	O			Sugar	-	S 4 1/2° E	52 1/2
	"	P			Walnut	12	S 64 1/2° E	330
By <u>B. J. Butler</u>	"	Q			Ash	5	N 36 3/4° E	63 1/2
	"	R			"	6	S 83 1/2° E	134
	"	S			"	-	S 23 1/2° E	122
	"	T			Stone		S 54 1/2° W	37
	"	U			"		N 52° W	42
	"	V			R. Oak	10	S 80° W	70 1/2
	"	W			Sugar	8	N 68° W	79
	"	X			"	6	N 46 1/2° E	133
	"	Y			"	8	N 59 1/2° E	154
	"	Z			"	5	S 60° W	90 1/2
<p style="margin-left: 20px;">Whittaker Lot</p> <p style="margin-left: 20px;">H. G. Blank 2/19/24</p>	"				Beech	10	S 17 1/2° W	106
	"				"	10	N 65° E	70
	"				G. Ash	10	N 23 1/4° W	124 1/2
	"				Sugar	8	S 11 1/2° E	153
	"				"	12	N 18 1/2° W	222
					G. Ash	12	S 4 1/2° W	185 1/2
					"		856 E	55 1/2
					"		N 49 E	60 1/2

From Old Ref 1926 R. Holloway 1970
Found Original Stone
Required M. C. Coker

N 3/4 IP
From old Ref.

NW cor Bank
NE cor Fire House
SW cor old Brick Store

S 56 E 36 1/2"
S 95 W 74 1/2"
N 49 E 40 5"

RECORD OF SURVEYS IN MORGAN COUNTY, INDIANA.

Section 34 Township 13 North, Range 2 West

REMARKS, &c., &c.	Corners.	Stone Mark.	Acres.	Hun.	Bearing Trees.	Diam.	Courses.	Dist.																									
<p style="text-align: center;">Established by Riggins at Stone cor.</p> <div style="display: flex; justify-content: space-around; align-items: center;"> <table border="1" style="border-collapse: collapse; text-align: center; width: 150px; height: 150px;"> <tr><td>E</td><td>D</td><td>C</td><td>B</td><td>A</td></tr> <tr><td>F</td><td>G</td><td>H</td><td>I</td><td>K</td></tr> <tr><td>P</td><td>O</td><td>N</td><td>M</td><td>L</td></tr> <tr><td>O</td><td>R</td><td>S</td><td>T</td><td>U</td></tr> <tr><td>Z</td><td>Y</td><td>X</td><td>W</td><td>V</td></tr> </table> <div style="margin-left: 10px;"> <p>Craig</p> </div> </div>	E	D	C	B	A	F	G	H	I	K	P	O	N	M	L	O	R	S	T	U	Z	Y	X	W	V	L	" "	" "	" "	Apple tree	2 1/2	S 27 W	60
	E	D	C	B	A																												
	F	G	H	I	K																												
	P	O	N	M	L																												
	O	R	S	T	U																												
	Z	Y	X	W	V																												
	" "	" "	" "	" "	" "	do	3	S 25 E	67																								
	" "	" "	" "	" "	" "	Cypress	6	N 34 W	49																								
	" "	" "	" "	" "	" "	Walnut	3	S 25 W	20																								
	" "	" "	" "	" "	" "	Stone bur		South	25																								
" "	" "	" "	" "	" "	" "		West	30																									
" "	" "	" "	" "	" "	Poplar	5	N 30 W	70																									
" "	" "	" "	" "	" "	R Oak	7	S 21 W	32																									
" "	" "	" "	" "	" "	Large stone		East	50																									
" "	" "	" "	" "	" "	do		North	25																									
" "	" "	" "	" "	" "	Stone buried		South	30																									
" "	" "	" "	" "	" "	" "		East	25																									
" "	" "	" "	" "	" "	" "		North	25																									
" "	" "	" "	" "	" "	" "		West	30																									
" "	" "	" "	" "	" "	" "		South	30																									
" "	" "	" "	" "	" "	" "		West	20																									
" "	" "	" "	" "	" "	Hickory	18	N 11 E	52																									
" "	" "	" "	" "	" "	Oak	4	N 51 W	49																									
" "	" "	" "	" "	" "	R Oak	10	N 31 W	36																									
" "	" "	" "	" "	" "	do	12	S 87 W	37 1/2																									
" "	" "	" "	" "	" "	Beech	18	N 33 E	87 1/2																									
" "	" "	" "	" "	" "	B Walnut	12	S 60 W	26																									
" "	" "	" "	" "	" "	E 111	8	North	56																									
" "	" "	" "	" "	" "	T. Walnut	3	East	45																									
" "	" "	" "	" "	" "	S 47 1/2	8	N. 46 W	13-6																									
" "	" "	" "	" "	" "	Cor foot		East	18																									
" "	" "	" "	" "	" "	Gray Ash	30	N. 75 E	101.75																									
" "	" "	" "	" "	" "	" "	2 1/2	N 15 E	31.75																									
" "	" "	" "	" "	" "	SEE	SEC	35-2																										
" "	" "	" "	" "	" "	SEE	SEC	27-W																										

J. S. Hoagland

Craig

By E. O. Gilbert
 July 19, 1877. Helpers
 H. G. Blank & Henry Whitlow

RECORD OF SURVEYS IN MORGAN COUNTY, INDIANA.

Section 35 Township 13 North, Range 2 West

REMARKS, &c., &c.	Corners.	Stone Mark.	Acres.	Hun.	Bearing Trees.	Diam.	Courses.	Dist.
<p style="text-align: center;"><i>By William H Craig</i></p>	At L	Stone cor.			Hickory	3	S 29 W	95'
	"	"	"		2 Oak	6	S 56 E	79'
	"	"	"		B Walnut	3	N 40 W	82'
	"	"	"		do	2	S 68 W	12'
	"	"	"		Sugar	16	S 21 E	41'
	"	"	"		"	22	S 35 W	31'
	"	"	"		Beech	26	N 19 W	13'
	"	"	"		B Oak	3	N 56 E	51'
	"	"	"		Beech	8	N 59 E	21'
	"	"	"		"	8	S 19 E	26'
<p style="text-align: center;"><i>Craig</i></p>	"	"		"	Poplar	60	N 57 W	45'
	"	"			Beech	20	N 10 E	95'
	"	"			Maple			20'
	"	"			Beech	4	S 68 E	56'
	"	"			Stone buried		S 45 W	20'
	"	"			Ash	4	S 61 E	62'
	"	"			W Oak	5	N 20 E	43'
	"	"			Stone		N 27 1/2 E	44'
	"	"			"		S 31 W	30'
	"	"			Sugar	16	N 39 W	63'
<p style="text-align: center;"><i>E. U. Bourne</i></p>	"	"			Hickory	8	S 56 1/2 W	86'
	"	"			"	5	N 50 E	36 1/2'
	"	"			Stone		N 32 W	39'
	"	"			MAPLE	36"	S 75 E	277'
	"	"			IRON FENCE			1011'
	"	"			POST IN CONCRETE			
	V	STONE			SEE SEC 36 "Z"	36"		4'
	L	SEE	SEC 36-P			15"		4'

RECORD OF SURVEYS IN MORGAN COUNTY, INDIANA.

Section 36 Township 13 North, Range 2 West.

REMARKS, &c., &c.	Corners.	Stone Mark.	Acres.	Hun.	Bearing Trees.	Diam.	Courses.	Dis.
Established by T.J.C.	At A	Stone			Buried		S 45 W	105
	" D	" cor			Beech	12	N 42 W	24
	" E	" "			W. Beech	2	N 8 E	32
	Z	STONE (1" 1/2 DOR)			D. Oak	6	N 14 E	97
	P	IRON PIN ST RD 142			Beech	16	N 55 E	87
					ASH	26"	WEST	67
					ASH	28"	EAST	36
					15" STONE		N 80 E	39.5
					UTILITY POLE IRON COR		S 90 E	36.5
					POST IN CEMENT IRON COR		N 35 W	49
					POST IN CEMENT		N 85 E	46.5
<p>"N" 36 13 2W</p> <p>"O" 34 13 2W - stones</p> <p>"N" 34 13 2W - stones</p> <p style="text-align: center; border: 1px solid black; border-radius: 15px; padding: 5px; display: inline-block;">State Hwy Plans</p>								