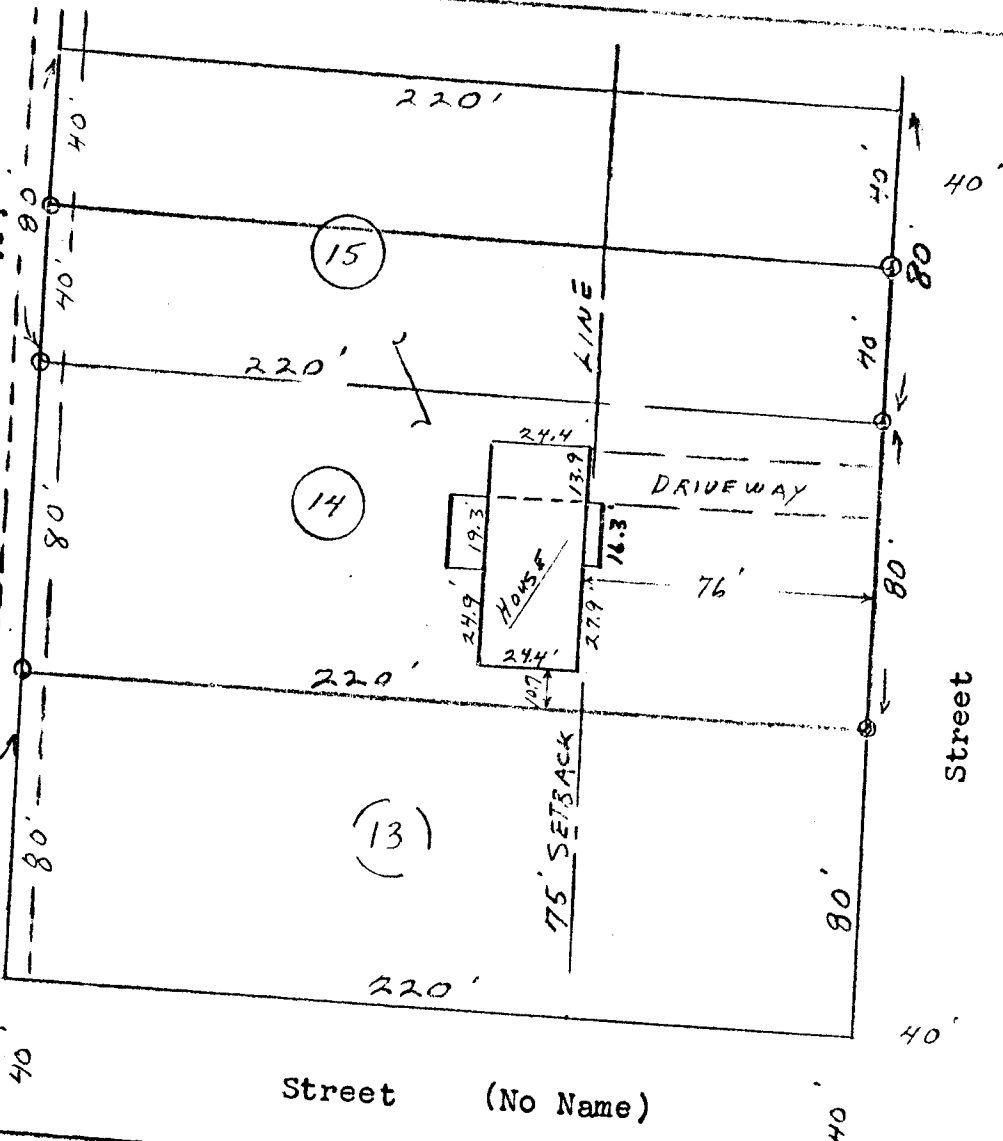


12' UTILITY EASEMENT



Note: 6' side yard line.

N

Scale 1" = 50'

Sept. 5, 1964

Revised 10-9-1964

430' to S.R.#39

ENGINEER'S CERTIFICATE

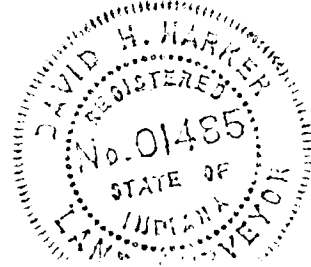
I certify that this plat is true and correct and that it concerns a tract described as Lot #14 and the south half of Lot #15 in Glenn W. Latta Second Subdivision of a part of the West half of the Northwest quarter of Section 12 Township 13 North Range 1 West in Monroe Township, Morgan County, Indiana. Deed Record 142 page 258.

The improvements are entirely within the tract as described and there is no overlap or encroachment with adjacent tracts.

Plat of Survey
for

CARL SHIELDS
Monrovia, Indiana

David H. Harker
David H. Harker
Civil Engineer
80 West Washington St.
Martinsville, Indiana



Property Line

Line

Corner of Property

GLENN LATTIA BONDANCE

1" Pipe

38.5'

LOT No. 6

LOT No. 5

LOT No. 4

LOT No. 3

LOT No. 2

LOT No. 1

Corner No. 3, N.E.
Corner of Subdiv

EAST LINE OF THE WEST HALF OF NW 1/4 SEC. 12

PLAT

GLENN LATTIA SUBDIVISION
OF MONROE TOWNSHIP,
PART OF THE WEST HALF
OF THE NW 1/4 OF SECTION
12, TOWNSHIP 13 N. Range 1 W.
Morgan County, Ind.
Wilbur F. Smith Co. Surveyor
OCT. 22 1952

100'

Corner No. 1
Pine Tree 7" N 85° E 104.6"
Steel Corner Post West 34.40'
S.W. Corner of Tract 26
Cont. Walk N.E. 14.6"

Corner No. 2
Sugar Tree 24" N E 35° 8"
Cont. Cor. Post West 26' 4"

Corner No. 3
Elm Tree 8" N 20° E 26' 14"
30 ft. Twin Hackberry N.W. 31° 8"

Corner No. 4
From Corner No. 1, S. 0° 30' East
22.3' to the S.E. Corner of
the NW 1/4 of Section 12